



Flintshire Public Services Board Annual Report

2022

This document is available in Welsh
Mae'r ddogfen hon ar gael yn Gymraeg

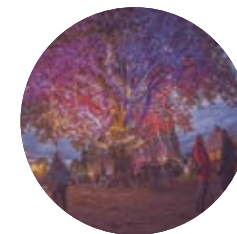


FLINTSHIRE PUBLIC SERVICES BOARD
BWRDD GWASANAETHAU CYHOEDDUS SIR Y FFLINT



Contents

Partners.....	04
SECTION 1: Introduction from the Flintshire Public Services Board (PSB)	05
SECTION 2: Meeting our well-being objectives.....	07
Our Priorities - Flintshire	
2.1 Community Safety - People are Safe.....	08
2.2 Healthy and Independent Living.....	10
SECTION 3: Community Resilience - Working with Wrexham Public Services Board	12
SECTION 4: Moving Forward - 2022 and beyond	14
SECTION 5: Governance and Assurance	15



Partners

These are the Flintshire Public Services Board Partners. These organisations have helped to develop and deliver the Well-being Plan for Flintshire:

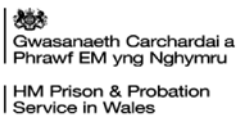


Gwasanaeth Tân ac Achub
Fire and Rescue Service

FLINTSHIRE PUBLIC SERVICES BOARD
BWRDD GWASANAETHAU CYHOEDDUS SIR Y FFLINT



Llywodraeth Cymru
Welsh Government



Pictures: Craig Colville

SECTION 1: Introduction from the Flintshire Public Services Board (PSB)

Flintshire has a longstanding and proud track record of partnership working. The communities we serve rightly expect public and third sector organisations to work together to deliver on shared priorities. The Flintshire Public Services Board (PSB) is at the heart of promoting a positive culture of collaboration, combining resources to achieve shared priorities that aim to improve local well-being.

The Flintshire PSB was formally established on 1st April 2016 as a result of the Well-being of Future Generations (Wales) Act 2015. The Board is made up of senior leaders from a number of public and voluntary sector organisations, including: Flintshire County Council; North Wales Fire and Rescue Services; Natural Resources Wales; Betsi Cadwaladr University Health Board; North Wales Police; Public Health Wales; Flintshire Local Voluntary Council; Glyndwr University; Coleg Cambria; National Probation Services (Wales) and Welsh Government.

Working together as a PSB these organisations have positively implemented the Well-being Plan for Flintshire 2021-22. The Board are pleased to present this Annual Report 2022, which demonstrates how the PSB has delivered against its well-being objectives of:



Neil Ayling

Flintshire County Council / Chair
Flintshire Public Services Board



Andrea Hughes

Betsi Cadwaladr University Health
Board / Vice Chair
Flintshire Public Services Board



Richard Fairhead

North Wales Fire and Rescue Services /
Vice Chair Flintshire Public Services Board

- Community Safety – People are Safe; and
- Healthy and Independent Living

The continued impact of the Covid-19 Pandemic meant that delivery against a number of priorities were affected by challenges and barriers directly or indirectly related to the Pandemic. Despite that real and ongoing challenge as we adapt to living with Covid -19, organisations are working tirelessly to meet the complex needs of individuals and the population, including those who are presenting for the first time to services with a higher level of complexity or need.

Furthermore, to extend partnership working in response to COVID-19, in June 2020 the Flintshire PSB and Wrexham PSB agreed to work together around community resilience to support communities during COVID-19 recovery and the longer-term. This working arrangement continued into 2021-22 and a brief progress report is included within this Annual Report.

We trust that this Annual Report provides an informative update on our progress to achieve the PSBs well-being objectives, along with further work we undertake in collaboration with our wider partners.





SECTION 2: Meeting Our Well-being Objectives

Flintshire Public Services Board: In-year Priorities 2021-2022:

The diagram opposite contains Flintshire PSB's well-being objectives along with in-year priorities under each. Over the following pages progress against these priorities is provided.



2.1 Community Safety – People are Safe

Community Safety is about reducing and tackling crime and disorder within Flintshire. It relies upon working in partnership with other agencies and communities to make the areas in which we live safer.

Key Outcomes 2021/2022: Violence against Women, Domestic Abuse and Sexual Violence (VAWDASV)

- All Police Officers and Police Community Support Officers have been issued Body Worn Video (BWV). Best practice training in using the BWV, and the impact that it will have on prosecutions and positive outcomes for victims of domestic abuse, has also been provided. BWV is now established as a standing item on the initial police training programme.
- The introduction and involvement (where required) of the Youth Justice Service in the weekly Flintshire Multi Agency Risk Assessment Conference (MARAC) meetings. MARAC is a monthly meeting between public sector partners to share information, to increase safety and to reduce the level of risk those at high risk due to domestic abuse.
- Neighbourhood Wardens aim to make contact with 90% of VAWDASV victim within one working day of receipt of the information. No data has been provided in respect of the number of referrals made to the service and performance against the target. This will be addressed within thin 2022 – 2023 plan
- Roll out of Levels 2 and 3 of the National Training Framework, developing the Ask and Act training (a process of targeted enquiry to be practiced across the Public Service to identify violence against women, domestic abuse and sexual violence). Local pathway in place and training commenced in 2021 and continued into 2022. Delivery of training being coordinated regionally by the VAWDASV team, but managed locally by Workforce and Development Manager. Ask and Act training contract currently out to tender, once provider has been announced, any changes necessary to current agreed delivery programme will be communicated.
- Flintshire County Council Housing Support Officers conduct visits to affected tenants.
- There was a 32% agency referral rate for Safe and Well checks (against a target of 35%). This target will remain the same for the year 2022/2023.
- Four additional disbursed units were commissioned for those experiencing domestic abuses involving alcohol, substance misuse and significant mental health issues. This is as a direct response to the 40% increase in referrals this year.

Key Outcomes 2021/2022: Protecting Vulnerable Adults

- During 2021/2022 Early Help Support Needs were identified by the Police on 378 separate occasions. These referrals were identified against the learning from the Adverse Childhood Experiences Time Training (how adverse childhood experiences affect people over time). 190 (just over half) of the 378 consented to referral for support.
- On a monthly basis in Flintshire 15 victims of scams are identified by the National Scan Team and referred to Trading Standards. Five TrueCall blockers are now available to be loaned out to victims of scam callers. This initiative is being run in conjunction with Age Concern and the Alzheimer's Society who identify and support victims.

Key Outcomes 2021/2022: Protecting Vulnerable Young People

- Covid 19 has impacted on the exploration alongside the Head Teacher's Federation - diversionary schemes around exclusions linked to drugs / alcohol and knife related behaviours. This will be now re-focused to meet this action within the 2022 - 2023 plan.
- The initial youth violence audit designed to ensure a multi-agency response to serious violence for young adults who are on the cusp of offending has been completed. A draft plan is in development and is being monitored and discussed at the Youth Justice Board Executive Level. The new Police and Crime Bill will also shape this work which will need to be informed by community profiles and needs assessments.

Key Outcomes 2021/2022: Protecting Our Communities

- During the Covid-19 pandemic a stand-alone forum was established to monitor the pre-vaccine and pre-treatment options of those visible vulnerable individuals within Flintshire with complex substance misuse and mental health needs, particularly those who are homeless or rough sleeping. This forum has now been stood down as the Vulnerability and Risk Management (VARM) group effectively captures these most at risk with others captured within the lower level demand and ASB meetings. Additional outreach from Youth Justice Service and Flintshire Sorted (SMS for young people) has now been re-established as COVID risk has fallen. *
- Missing, Exploited and Trafficked (MET) Panel review started and the Terms of Reference have been considered. The forward action is for performance measures and trends analysis recognition methodology to be agreed in order that performance can be monitored.

Community Safety - People Are Safe: Reflections and Challenges

- As referenced above there is a 40% increase in referrals in respect of violence against women, domestic abuse and sexual violence
- The 4P Plan (Protect, Prepare, Prevent and Pursue) relating to Community Profiles recommendations and their delivery across Flintshire will be implemented through the 2022/2023 plan. This will be progressed through the convening of a monthly Flintshire Serious Organised Crime Partners meeting.
- To enable effective performance monitoring, performance measures would benefit from being set to evaluate all initiatives.

2.2 Healthy and Independent Living

Key Outcomes 2021/2022: Tŷ Nyth

- Flintshire County Council, in collaboration with Wrexham County Borough Council, are in the final stages of constructing a new residential assessment centre for children, which completes construction in 2022. The Tŷ Nyth centre, in Mold, will adopt Multi Systemic Therapy (MST) models of care and support to meet the needs of children and young people, while longer term solutions such as family reunification, local fostering or residential placement are implemented.

Key Outcomes 2021/2022: Early Years

- The Early Years Integration and Transformation Pathfinder programme has seen positive progress following a self-evaluation process supported by the Early Intervention Foundation. In addition there has been an expansion of the Flying Start Service and the development of the No Wrong Door initiatives that focus on simplifying access to help and support for families.

Key Outcomes 2021/2022: D2RA

- The opening of the Cyflawni expansion at Marleyfield House Care Home in Buckley now provides a dedicated Discharge to Recover and Assess (D2RA) service. This supports patients on discharge from hospital to receive intensive therapy led support to allow them to maximize their independence before returning home.
- Development and expansion of the Home First model has enabled improved flow of effective hospital discharges from Wrexham Maelor and the Countess of Chester hospitals.

Key Outcomes 2021/2022: Frailty

- A new service model to support people living with the challenges of frailty has been embedded into community health services. This collaborative health and social care initiative provides more consistent intermediate care decisions through the development of community pathways. Health teams have worked closely with the Rainbow Foundation based in Penley to develop a smoother model of discharge and reablement for patients who are discharged into 'Ready for Home' beds. The Welsh Ambulance Services Trust have become partners with the Health Board as part of a pilot project to reduce admission to hospital with falls.

Key Outcomes 2021/2022: Croes Atti

- To respond to the needs of an ageing population in Flintshire a feasibility study was undertaken for proposed relocation and expansion of the Croes Atti care home in Flint. This will see the redevelopment of the former Flint Hospital site to provide an

integrated residential care facility. Further planning and design work will continue in 2022 to support the start of construction in Spring 2023. This ambitious project will be supported by Welsh Government and Flintshire County Council capital funding with a target completion date of Winter 2024/25.

Key Outcomes 2021/2022: Ageing Well

- Flintshire County Council continues to work with older people's service partners, local organisations and community groups to make Flintshire a great place to live, particularly for the ageing population and those people living with dementia. This work aligns to the Age Friendly Wales: Our Strategy for an Ageing Society and the North Wales and Flintshire Dementia Strategies.

Key Outcomes 2021/2022: Flintshire Dementia Strategy

- Through co-production and community engagement, Flintshire has developed a County Dementia Strategy and will apply for membership of the World Health Organisation (WHO) Global Network of Age-Friendly Cities & Communities in 2023. This network will provide opportunities for Flintshire to showcase our age-friendly communities and share best practices with other counties and cities in Wales, England and across the world.

Healthy and Independent Living: Reflections and Challenges

- Flintshire will experience and increase in the number of people who are 65 and older, demand for health and social care will increase.
- 19% of children in North Wales who are 10+ have mental health problems (Welsh average is 14%)
- Organisations across health and social care are faced with unprecedented challenges in sustaining, and where necessary, growing their workforce. This is a national issue and one which does not have a single, short term solution. There is significant work being undertaken to tackle the causes and consequences of this workforce challenge and this is likely to remain a focus of activity in future years.
- There were also significant challenges faced by the construction industry across the nation. Despite these challenges, there were notable achievements in Flintshire, including the completion of the expansion of Marleyfield House Care Home in Buckley. The development of a new children's assessment centre at Ty Nyth in Mold, also progressed towards completion later in 2022.
- In order to respond to the impact of COVID-19 related social restrictions, a range of approaches were taken to support individuals and community groups to maintain contact and retain strong support networks. The use of technology helped to facilitate regular online meetings and events. Social care partners provided socially distanced outdoor events throughout the year, utilising the excellent parks and green spaces in the county. However it is recognised that ongoing support will be required to support people to return to previous levels of social participation.

Section 3: Community Resilience



Community Resilience - Working with Wrexham Public Services Board

Although separate Public Services Board (PSBs) operate in Flintshire and Wrexham, the two PSBs have been working closely together since June 2020 to tackle common challenges specifically around community resilience and Covid 19 recovery. Over the past two years the following four themed priorities have been collaborated on:

- Children and Young people
- Environment
- Mental health and well-being
- Poverty and Inequality

Key Outcomes 2021/2022

- Building and cementing strong working relationships, communication networks and learning with Wrexham PSB partners and their stakeholders / communities.
- The TEDxGwE: Countdown to COP26 was organised through a partnership between GwE (North Wales school improvement service), Wrexham Glyndwr University, Natural Resources Wales, Renew Wales, and Do-Well (UK) as part of the UN's Countdown to COP26 series. And as such was registered with the UN.

The event aimed to bring partners and community leaders from across the North Wales region together to listen to children and young people present their own TEDTalks about climate change.

- Green Social Prescribing - PSB partners in collaboration with Public Health Wales carried out a review across North Wales into what and how social prescribing is being delivered and how green social prescribing is being used.

SECTION 4:

Moving Forward – 2022 and beyond

In addition to the PSBs work on current well-being objectives, during 2021-22 the PSB has developed, consulted upon and published “An Assessment of Well-being in Flintshire 2022”. A copy of this can be found on the PSBs webpages: <https://www.flintshire.gov.uk/en/Resident/Council-and-Democracy/Flintshire-Public-Services-Board.aspx>

Production and publication of An Assessment of Well-being in Flintshire 2022 not only fulfils one of the PSBs statutory roles but will also help inform the PSBs next set of well-being priorities as we develop the new Flintshire Well-being Plan for 2023-2028. The Flintshire PSB has been delighted to work with students at Glyndwr University who have creatively collated key information from the North Wales PSB Well-being Assessments into a summary document. A copy of this summary can be found at: <https://glyndwr.ac.uk/news/articles/wgu-design-students-create-new-magazine-to-support-the-work-of-the-north-wales-public-service-boards/>

Well-Being Plan 2023 - 2028

Despite the ongoing challenge of the impact of the Covid-19 pandemic, the current and real effect of the fuel crisis and the increase in cost of living, organisations are working relentlessly to meet the needs of our community. Partnership working and community resilience have never been so important or necessary and the Well-Being Plan 2023-2028 will build on the achievement of the past six years in order to best nurture, sustain and protect our community.

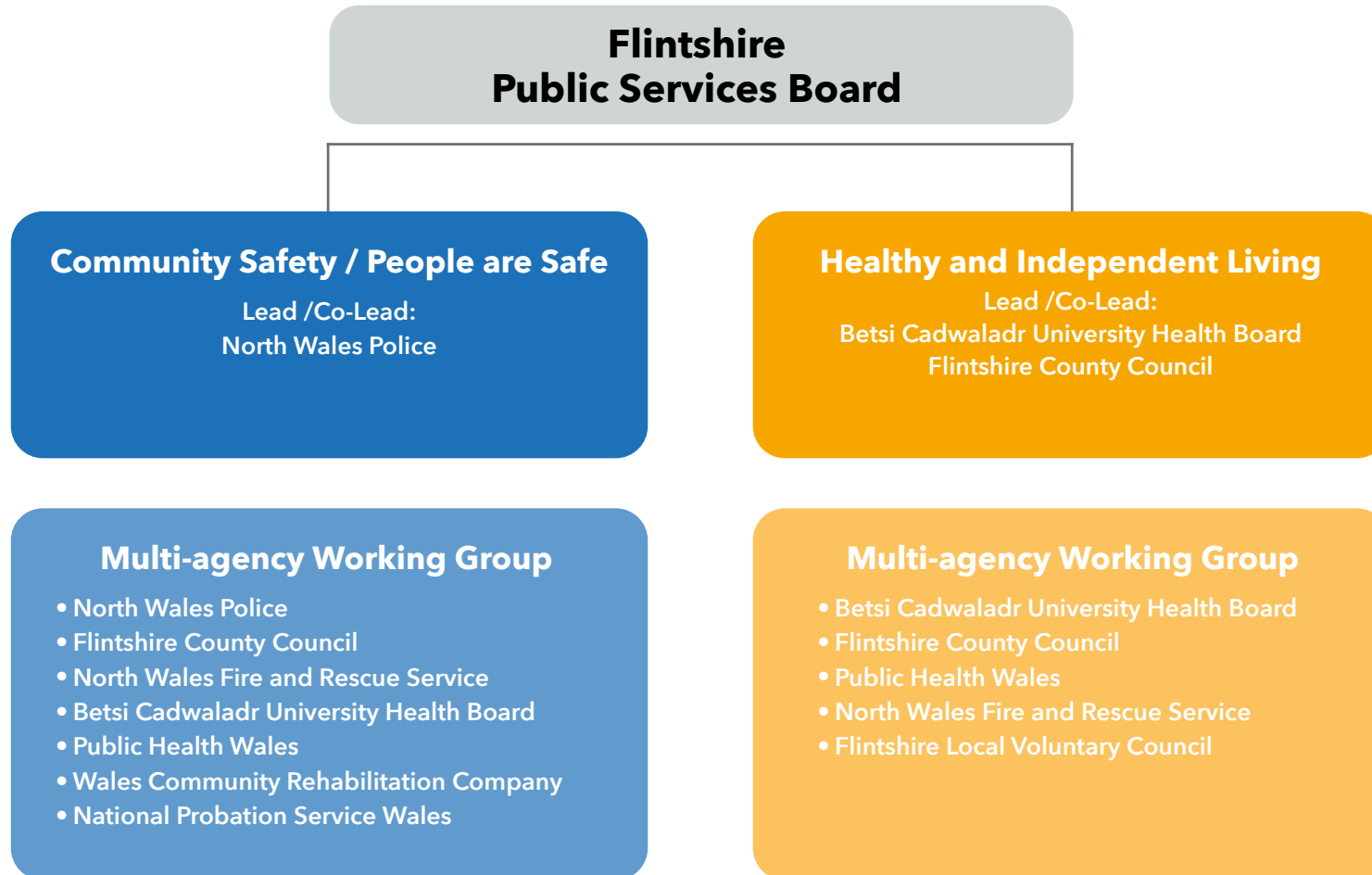
SECTION 5:

Governance and Assurance

The Public Services Board (PSB) is accountable for the delivery of the Well-Being Plan and has monitored, along with its partners, progress and achievements made.

In line with the requirements of the Well-Being of Future Generations (Wales) Act 2015, the Flintshire Public Services Board Annual Report 2022 will be published and a copy will be sent to Welsh Government, the Future Generations Commissioner for Wales, the Auditor General for Wales and the appropriate Council Scrutiny Committee.

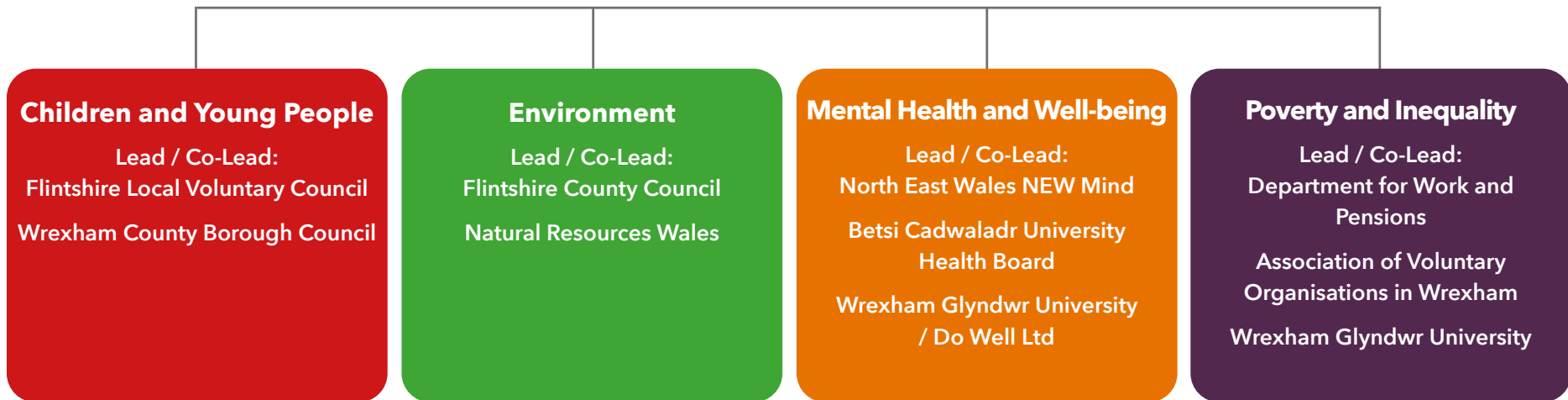
Partnership Structure – Flintshire Priorities



* Other partners may also contribute towards delivery

Partnership Structure – Joint Priorities

Joint Flintshire and Wrexham Public Services Board



Accessible Formats

This is a bilingual document published in both Welsh and English.

Other formats are available upon request using the following contact details:

Email: corporatebusiness@flintshire.gov.uk

