

Cynllun Datblygu Lleol Sir y Fflint i'w
Archwilio gan y Cyhoedd
2015 - 2030

Papur Cefndir 5
Gwastraff

Medi 2019

Contents

1. Cyflwyniad	2
2. Cyd-destun y Polisi	2
3. Y Cyd-destun Lleol	4
4. Baseline Llinell sylfaen	5
5. Provision and need Darpariaeth ac Angen	7
6. Review of UDP Policies Adolygiad o bolisiau CDU	8
7. Preferred Strategy Y Strategaeth a Ffefrir	10
8. Polisiau Gwastraff y CDLI	10

Atodiadau

Atodiad 1: Cyfleusterau Gwastraff a Ganiateir yn Sir y Fflint	13
Atodiad 2: Gwastraff a Reolir gan Gyfleusterau Gwastraff yn Sir y Fflint 2017-18	17
Atodiad 3: Gwastraff a Waredir gan Gyfleusterau Gwastraff Sir y Fflint 2017-18	20
Atodiad 4: Gwastraff yr Awdurdod Lleol a Gesglir yng Ngogledd Cymru	21
Atodiad 5: Ceisiadau Cynllunio Gwastraff ers mabwysiadu'r CDU	22
Atodiad 6: Aseiad PE1 Safleoedd er ystyriaeth ar gyfer defnyddiau	27

gwastraff EN21

Atodiad 7: Aseiad PE2 Safleoedd er ystyriaeth ar gyfer defnyddiau
gwastraff EN21

29

Papur Cefndir: Gwastraff

1. Cyflwyniad

1.1. Mae'r papur cefndir hwn wedi cael ei baratoi i gefnogi datblygiad y Cynllun Datblygu Lleol (CDLI) 2015-2030. Pwrpas y papur yw canfod y sail tystiolaeth o ran gwastraff yn y Sir ac egluro sut mae polisiâu gwastraff wedi cael eu datblygu. Ers mabwysiadu'r CDU mae newidiadau sylweddol yn y ffordd y mae gwastraff yn cael ei reoli, y cyd-destun deddfwriaethol a fframwaith rheoleiddio, ac mae'r rhain oll angen cael eu hystyried wrth ddatblygu'r CDLI.

2. Cyd-destun y Polisi

2.1. Mae'r adran ganlynol yn crynhoi'r cyd-destun polisi cenedlaethol a lleol perthnasol sydd angen cael ei ystyried wrth lunio'r CDLI. Ni fydd y Polisi Cenedlaethol yn cael ei ailadrodd yn y CDLI, fodd bynnag cyfeirir at y themâu allweddol sy'n codi o'r polisi cenedlaethol, ac eir i'r afael â materion sy'n benodol i'r Sir drwy bolisi lleol penodol os oes angen.

Deddfwriaeth Ewropeaidd

2.2. Mae deddfwriaeth gynhwysfawr ar lefel Ewropeaidd o ran gwastraff, sy'n nodi'r gofynion ar gyfer mathau amrywiol o wastraff. Y Gyfarwyddeb trosfwaol ar gyfer gwastraff yw'r Gyfarwyddeb Fframwaith Gwastraff. Mae polisi Ewropeaidd yn parhau i newid ac mae'r ffocws erbyn hyn ar gyflawni Economi Gylchol. Mae deddfwriaeth ddomestig yn sicrhau, lle bynnag bosibl, bod deddfwriaeth Ewropeaidd yn cael ei bennu'n uniongyrchol yng Nghymru. Y ddeddfwriaeth berthnasol yw:

- Y Gyfarwyddeb Fframwaith Gwastraff (2018): Sy'n nodi'r angen i bob Aelod-Wladwriaeth sefydlu cynlluniau rheoli gwastraff.
- Mae'r Gyfarwyddeb Tirlenwi (1999): Yn nodi'r canlynol: Tri dosbarth tirlenwi; Amheryglus, Peryglus ac Anadweithiol; Targedau ar gyfer gostwng gwastraff bioddiraddadwy sy'n mynd i dirlenwi; gwastraff na ddylid ei dderbyn gan safleoedd tirlenwi; cyfres o ofynion manwl o ran gweithrediad a rheolaeth safleoedd tirlenwi.
- Cyfarwyddeb Allyriadau Diwydiannol (2010): Wedi dod a nifer o gyfarwyddebau gwahanol ynghyd, gan gynnwys y Gyfarwyddeb Llosgi Gwastraff. Yn nodi cyfyngiadau allyriadau ar gyfer amryw o weithfeydd gan gynnwys ffatrioedd llosgi gwastraff.
- Cyfarwyddeb Diwedd Bywyd Cerbyd (2000)
- Cyfarwyddeb Cyfarpar Trydanol ac Electronig Gwastraff (2013)
- Cyfarwyddeb Gwastraff Cloddio (2006)

Polisi Cynllunio Cymru - 10fed Argraffiad (2018)

2.3. Mae Polisi Cynllunio Cymru 10 (PCC10) yn nodi polisiâu cynllunio defnydd tir Llywodraeth Cymru. Caiff ei gefnogi gan gyfres o Nodiadau Cyngor Technegol.

Mae PCC10 yn nodi rôl y mae angen i'r system defnydd tir ei chwarae i hwyluso rheoli gwastraff cynaliadwy ac yn cydnabod y trawsnewidiad sy'n digwydd yn y diwydiant gwastraff. Ei nod yw gwneud y defnydd gorau o adnoddau materol a hyrwyddo economi gylchol drwy ddewisiadau dylunio er mwyn atal gwastraff¹. Mae'r PCC10 yn datgan bod gan y system gynllunio rôl bwysig i chwarae i hwyluso rheoli gwastraff, drwy ddarparu fframwaith ar gyfer gwneud penderfyniadau².

Nodyn Cyngor Technegol 21: Gwastraff (2014)

- 2.4. Mae Nodyn Cyngor Technegol (TAN) 21 yn nodi'r prif egwyddorion y dylid eu cymhwyso wrth gynllunio ar gyfer gwastraff ac yn cynghori bod y PCC, TAN 21, CDLI, Tuag at Ddyfodol Diwastraff a Chynlluniau'r Sector yn creu'r cynllun rheoli gwastraff cyffredinol ar gyfer Cymru, yn unol â gofynion Cyfraith Ewrop. Mae TAN 21 yn nodi'r angen i sicrhau cynhwysedd gwaredu ac adfer digonol o wastraff trefol wrth osgoi gorddarparu. Mae TAN 21 hefyd yn nodi gofynion monitro rhanbarthol.

Strategaeth Gwastraff Cenedlaethol: Tuag at Ddyfodol Diwastraff

- 2.5. Tuag at Ddyfodol Diwastraff yw strategaeth trosfwaol Llywodraeth Cymru ar gyfer rheoli gwastraff, gosod targedau ailgylchu, a chap ar Ynni o Wastraff a thirlenwi. Mae'r ddogfen yn cynnwys targedau tymor canolig hyd at 2024/25 a dyheadau hirdymor nes 2050. Prif nod y ddogfen yw sicrhau bod gwastraff yn cael ei reoli mewn ffordd gynaliadwy.

Cynllun y Sector Casgliadau, Isadeiledd a Marchnadoedd

- 2.6. Mae Cynllun y Sector Casgliadau Isadeiledd a Marchnadoedd (CCIM) yn nodi'r angen i osgoi gorddarparu mathau penodol o gyfleusterau, gan gynnwys adfer a gwaredu. Mae'r CCIM yn rhagamcanu'r lefel o gynhwysedd gwaredu ac adfer o fewn rhanbarth cynllunio.

Cynllun y Sector Trefol

- 2.7. Mae Cynllun y Sector Trefol yn nodi'r camau gweithredu yng Nghymru i sicrhau bod gwastraff a gesglir gan yr awdurdod lleol yn cael ei reoli mewn ffordd gynaliadwy. Mae'r ddogfen yn nodi cyfres o gamau gweithredu i annog atal gwastraff, paratodau ar gyfer aildefnyddio ac ailgylchu ac yn darparu eglurhad pellach o ran capiau ar ynni o wastraff a thirlenwi.

Cynllun y Sector Adeiladu a Dymchwel

¹ PCC10 Para 5.12 <https://llyw.cymru/sites/default/files/publications/2019-02/polisi-cynllunio-cymru-rhifyn-10.pdf>

² PCC10 Para 5.13 <https://llyw.cymru/sites/default/files/publications/2019-02/polisi-cynllunio-cymru-rhifyn-10.pdf>

- 2.8. Mae Cynllun y Sector Adeiladu a Dymchwel, fel Cynllun y Sector Trefol, yn nodi'r camau gweithredu yng Nghymru i sicrhau bod gwastraff adeiladu a dymchwel yn cael ei reoli mewn ffordd gynaliadwy.

Cynllun y Sector Gweithgynhyrchu Bwydydd, Gwasanaeth a Manwerthu

- 2.9. Mae Cynllun y Sector Gweithgynhyrchu Bwydydd, Gwasanaeth a Manwerthu, fel Cynllun y Sector Trefol, yn nodi'r camau gweithredu yng Nghymru i sicrhau bod y gwastraff a gynhyrchir gan y sector hwn yn cael ei reoli mewn ffordd gynaliadwy drwy ganolbwyntio ar atal, ailgylchu dolen gaeedig, lefel uchel a threulio anaerobig o wastraff bwyd.

3. Y Cyd-destun Lleol

- 3.1. Mae nifer fawr o newidiadau wedi bod yn y diwydiant gwastraff a'r ffordd y caiff ei reoleiddio yn y blynyddoedd diwethaf. Mae'r newidiadau hyn wedi cael eu cyflwyno i annog rheolaeth gynaliadwy o wastraff, lleihau'r baich rheoleiddio os yw'n briodol gwneud hynny, er enghraifft Diwedd Gwastraff, ac i gynyddu rheoleiddio os oes achos cyfiawn i wneud hynny. Trafodir y newidiadau mwyaf arwyddocaol isod.
- 3.2. Daeth y gofyniad i gasglu gwastraff ar wahân i rym o'r 1 Ionawr 2015. Mae'r gofynion yn gymwys i wastraff o bob ffynhonnell, gan gynnwys gwastraff masnachol a gwastraff diwydiannol, ac yn golygu bod rhaid darparu casgliadau ar wahân ar gyfer papur, metel, plastig a gwydr, neu os yw casgliad yn gymysg, rhaid ei brosesu i safon briodol. Mae'r gofyniad hwn yn ychwanegol i'r gofyniad i drin gwastraff cyn ei waredu fel gwastraff tirlenwi, a ddaeth i rym yn 2017.
- 3.3. Mae cyfraddau Treth Tirlenwi wedi cynyddu yn sylweddol ers mabwysiadu'r CDU. Y gyfradd yn 2012/13 oedd £64 fesul tunnell ar gyfer y gyfradd safonol a £2 fesul tunnell ar gyfer cyfradd is. Ar hyn o bryd mae Treth Gwarediadau Tirlenwi yn £91.35 fesul tunnell ar gyfer y gyfradd safonol a £2.80 ar gyfer cyfradd is. Cyfradd gwarediadau anawdurdodedig yw £137 fesul tunnell. Mae'r dreth uchel ar gyfer gwaredu gwastraff gan safleoedd tirlenwi yn lleihau gallu safleoedd tirlenwi i gystadlu gyda mathau eraill o reoli gwastraff, lle nad yw'r dreth yn gymwys. Fodd bynnag, mae'n cynorthwyo i wthio gwastraff i fyny'r hierarchaeth gwastraff.

- 3.4. Mae estyniad i gyfleusterau presennol a datblygiad cyfleusterau newydd wedi dylanwadu'n fawr ar y ffordd caiff gwastraff ei reoli, ac ymhle. Mae Awdurdodau Lleol wedi cael ysgogiad ariannol i gaffael lleoedd dynodedig ar gyfer rheoli gwastraff bwyd a gwastraff gweddillol. Mae nifer o gyfleusterau wedi cael eu datblygu ar draws Cymru mewn ymateb i hyn, gan gynnwys Parc Adfer a'r cyfleuster treulio anaerobig yn Rhuallt, Sir Ddinbych, sy'n uniongyrchol berthnasol i Sir y Fflint. Mae'r ddau gyfleuster wedi cael eu caffael i reoli gwastraff a gesglir gan Gyngor Sir y Fflint. Mae gan y Parc Adfer ganiatâd i reoli 200,000 tonnell o wastraff gweddillol bob blwyddyn. Yno hefyd mae cynhwysedd i reoli gwastraff masnachol a diwydiannol, er bod y swm y gellir ei reoli yn dibynnu ar ofynion yr Awdurdodau Partner. Gall ddatblygiad cyfleusterau o'r fath effeithio ar gwmnïau rheoli gwastraff masnachol sy'n dibynnu ar gontractau'r awdurdod lleol. Oherwydd Parc Adfer a'r cyfleuster treulio anaerobig, nid oes angen dynodedig ar gyfer isadeiledd adfer neu waredu pellach o fewn y Sir. Mae gan y Parc Adfer gynhwysedd i dderbyn gwastraff trydydd parti ac mae caniatâd cynllunio wedi'i sicrhau ac yn y broses o gael ei weithredu ar gyfer safle tirlenwi yn Chwarel Parry. Felly, nid oes angen dynodedig i ddarparu dyraniadau strategol ar gyfer rheoli gwastraff o fewn y CDLI.
- 3.5. O ganlyniad i leihau cyfaint y gwastraff sy'n cael ei adael mewn safleoedd tirlenwi, mae hyfywedd economaidd tirlenwi wedi cael ei effeithio. Mae nifer o safleoedd gwaredu wedi cau yng Nghymru cyn eu cwblhau, oherwydd y costau sy'n gysylltiedig â gweithredu o'i gymharu â'r refeniw a gynhyrchir. Mae gweddill y safleoedd tirlenwi yn rhanbarth Gogledd Cymru yn cael eu gweithredu gan gwmnïau masnachol a all wneud penderfyniadau gweithredu tebyg. Byddai hyn yn golygu na fydd digon o gynhwysedd yn y rhanbarth, a byddai'n ofynnol dan y fframwaith polisi i ganfod safle/oedd ychwanegol.
- Yn y pen draw, mae hyn yn fater i Lywodraeth Cymru fynd i'r afael ag o.

4. Llinell sylfaen

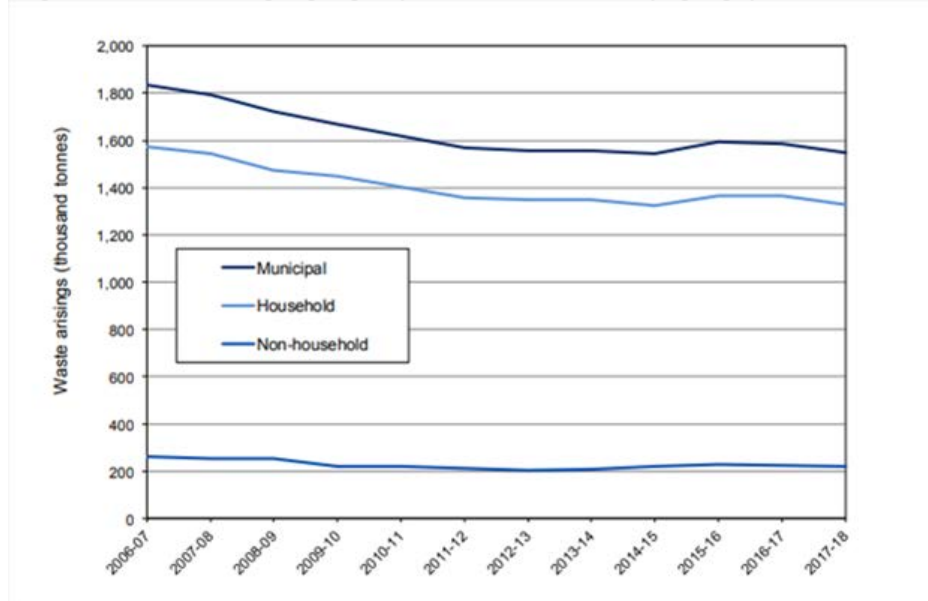
Cyflwyniad

- 4.1. Mae data gwastraff yn cael ei gasglu a'i ledaenu yn bennaf ar sail lle gafodd ei gynhyrchu. Mae gofyniad i awdurdodau lleol ddarparu data gwastraff i Lywodraeth Cymru sy'n arwain at set o ddata cynhwysfawr ar gyfer y gwastraff a gesglir gan yr awdurdod lleol. Mae gwastraff a gynhyrchir gan sectorau eraill yn cael ei ddarparu'n gyffredinol gan ddefnyddio arolygon achlysurol. Mae'r data a gesglir gan ddefnyddio ffurflenni gwastraff a ddarperir i Gyfoeth Naturiol Cymru yn llai cynhwysfawr, a dylid ei ddefnyddio â gofal oherwydd y ffordd caiff ei gasglu.

Gwastraff a Gesglir gan yr Awdurdodau Lleol

4.2. Nid yw gwastraff yn Sir y Fflint wedi newid yn sylweddol ers 2008/09, gyda mân amrywiadau a gostyngiad cyffredinol erbyn 2018/19. Mae Cymru gyfan wedi profi gostyngiad cyffredinol mewn gwastraff ers 2004, gweler Ffigur 1 isod, yn erbyn cefndir o gynnydd mewn nifer o dai a phoblogaeth. Cafodd y CDU ei gyhoeddi mewn cyfnod lle disgwylwyd i gasgliadau gwastraff yr awdurdod lleol gynyddu. Er enghraifft, rhagwelodd y Cynllun Gwastraff Rhanbarthol y byddai gwastraff a gesglir gan yr Awdurdod Lleol yn 718,734 o dunelli yn 2013/14³ o'i gymharu â'r gwastraff gwirioneddol a oedd yn 430,300 tunnell, gweler Tabl 1 isod.

Ffigur 1: Gwastraff a gesglir gan yr Awdurdodau Lleol yng Nghymru



Ffynhonnell: Llif Data Gwastraff

Tabl1: Gwastraff a Gesglir gan yr Awdurdodau Lleol: Gwastraff yn Sir y Fflint a Gogledd Cymru

Ardal	2008/09	2009/10	2010/11	2011/12	2012/13	2013/14	2014/15
Sir y Fflint	87,900	87,700	88,300	86,900	88,100	89,900	84,500
Gogledd Cymru	461,700	446,900	439,700	431,200	432,400	430,300	419,600
	2015/16	2016/17	2017/18				
	85,456	86,256	82,718				
	422,551	428,000	407,743				

4.3. Mae'r ffordd y caiff gwastraff ei reoli hefyd wedi newid yn sylweddol ers 2008, gyda chyfraddau ailgylchu a chompostio'n cynyddu'n sylweddol dros y ddegawd ddiwethaf. Mae Llywodraeth Cymru wedi nodi targedau ailgylchu statudol, ac mae Sir y Fflint wedi bodloni'r rhain. Er bod gostyngiad mewn cyfraddau ailgylchu yn Sir y Fflint rhwng 2016/17 a 2017/18, mae Sir y Fflint yn agos iawn i fodloni'r targed 2019/20 o 68%, ac ar y trywydd i fodloni targed 2024/25 o 70%, gweler Tabl 2 isod.

Tabl 2: Cyfraddau Ailgylchu

³ Cynllun Gwastraff Rhanbarthol Gogledd Cymru, Adolygiad Cyntaf

Ardal	2008/ 2009	2009/ 2010	2010/ 2011	2011/ 2012	2012/ 2013	2013/ 2014	2014/ 2015	2015/ 2016	2016/ 2017	2017/ 2018
Sir y Fflint	42.4	43.2	47.1	48.3	54.9	55.1	55.0	58.5	68.2	67.2
Gogledd Cymru	39.4	44.0	47.5	50.5	54.2	55.7	57.0	60.0	65.2	64.7
Cymru	-	-	-	-	52.3	54.3	56.2	60.2	63.8	62.7
Targedau Statudol					52	Amhert hnasol	Amhert hnasol	58	Amhert hnasol	Amhe rthnas ol

Ffynhonnell: StatsCymru

5. Darpariaeth ac Angen

- 5.1. Mae ystod o gyfleusterau rheoli gwastraff yn Sir y Fflint. Mae'r Cyngor yn gweithredu nifer o safleoedd amwynder dinesig a chyfleuster compostio, ac mae'r gweddill yn cael eu gweithredu gan gwmnïau preifat. Mae Atodiad 1 yn dangos y cyfleusterau trwyddedig yn Sir y Fflint, h.y. y safleoedd hynny sydd â thrwydded amgylcheddol gan Gyfoeth Naturiol Cymru (CNC) sy'n eu caniatáu i reoli gwastraff. Mae nifer fawr o gyfleusterau o'i gymharu ag awdurdodau eraill yng Ngogledd Cymru sy'n debygol o adlewyrchu natur drefol y Sir, a'i agosrwydd at y cytrefi yn y Gogledd Orllewin. Mae Atodiad 2 yn dangos manylion y gwastraff a reolir gan gyfleusterau presennol yn Sir y Fflint.
- 5.2. Mae gwybodaeth ar wastraff wedi'i gyfyngu ar lefel Awdurdod Cynllunio Lleol. Gall ffurflenni data gwastraff a ddarperir gan CNC roi syniad o'r swm o wastraff a gaiff ei gynhyrchu o fewn Sir y Fflint, ond rhaid bod yn ofalus wrth ei ddefnyddio gan nad yw'n cynnwys gwastraff sy'n cael ei anfon i gyfleusterau eithriedig, a gall danamcangyfrif y gwastraff a gaiff ei gynhyrchu oherwydd materion yn ymwneud â chodio a symud gwastraff drwy'r gorsafoedd trosglwyddo gwastraff. Er gwaethaf hynny, mae Atodiad 3 a 4 yn dangos, o'r 3,022,733 tonnall o wastraff a dderbyniwyd gan gyfleusterau yng Ngogledd Cymru, cafodd 1,121,175 tonnall ohono ei reoli gan Sir y Fflint. Mae hyn yn debygol o fod oherwydd natur ddiwydiannol yr awdurdodau hyn o'u cymharu ag awdurdodau eraill yng Ngogledd Cymru, a'u hagosrwydd at Loegr.
- 5.3. Mae nifer o ganiatâd cynllunio rheoli gwastraff wedi cael eu cymeradwyo o fewn y Sir ers mabwysiadu'r CDU yn 2011, fel y manylir o fewn Atodiad 5.
- 5.4. Nid oes angen dynodedig am isadeiledd adfer neu waredu pellach o fewn y Sir, oherwydd y datblygiad sydd wedi'i wneud o ran y Parc Adfer, a fydd yn rheoli gwastraff gweddilliol ar draws Awdurdodau Partner Gogledd Cymru, a'r cyfleuster treulio anaerobig a ddatblygwyd yn Rhualt yn Sir Ddinbych, sy'n rheoli gwastraff bwyd o Sir y Fflint, Sir Ddinbych a Chonwy. Mae caniatâd cynllunio hefyd wedi cael ei sicrhau ac yn y broses o gael ei weithredu ar gyfer safle tirlenwi yn Chwarel Parry. Felly, nid chanfuwyd unrhyw ddyraniadau strategol ar gyfer rheoli gwastraff o fewn y CDLI.

- 5.5. Yn ystod yr ymgynghoriad 'Galwad am Safleoedd' a gynhaliwyd rhwng 28 Chwefror 2014 i 30 Mai 2014, cafodd safle ar gyfer 'Mewnlwad Adfer Anadweithiol' yn Chwarel Ruby (cyfeirnod safle RHYD001) ei gyflwyno ar gyfer ystyriaeth. Mae Chwarel Ruby yn chwarel siâl sydd heb fod yn weithredol ers nifer o flynyddoedd ac wedi adfywio'n naturiol. Er bod adolygiad cyfnodol wedi'i fethu a bydd angen nifer o gynlluniau er mwyn adfywio'r chwarel, mae gan y safle ganiatâd cynllunio ar gyfer cloddio a gweithio mwynau tan 31 Rhagfyr 2021. Mae'r safle wedi'i leoli o fewn cefn gwlad agored ac wedi gweithredu fel chwarel o'r blaen. Mae rhan o'r safle yn cynnwys Safle Daearegol o Bwysigrwydd Rhanbarthol, coetir hynafol, safleoedd bywyd gwyllt Coed Lygan-Uchaf a Choed Nant Figillt, diddordeb archeolegol, wedi'i leoli mewn parth llifogydd C2, ac mae Adeiladau Rhestredig Gradd 2 o fewn 250m i'r safle sy'n gysylltiedig â'r hen weithfeydd brics a mwynfa.
- 5.6. Ar hyn o bryd, nid oes cefnogaeth polisi cenedlaethol ar gyfer adfer chwareli ar gyfer tirlenwi. Nod polisi gwastraff yw annog gwastraff i fyny'r hierarchaeth gwastraff gyda gwaredu ar waelod yr hierarchaeth. Felly, ni ystyrir yn briodol darparu dyraniad gwastraff penodol ar gyfer y math hwn o safle o fewn y CDLI.
- 5.7. Mae TAN21 yn ei gwneud yn glir bod gweithrediad yr hierarchaeth gwastraff yn dangos nad yw gwaredu gwastraff anadweithiol yn dderbyniol mewn mwyafrif o sefyllfaoedd, a heb gyfiawnhad eithriadol, dylai ceisiadau cynllunio ar gyfer gwaredu gwastraff anadweithiol gael eu gwrthod.⁴ Pe gyflwynir caniatâd cynllunio ar gyfer mewnlwad adfer anadweithiol ar y safle hwn, mae polisiâu addas wedi cael eu drafftio o fewn y CDLI a all asesu cais o'r fath. Fodd bynnag, byddai rhaid dangos yr amgylchiadau eithriadol i roi cyfiawnhad ar gyfer gwaredu neu adfer gwastraff anadweithiol.
- 5.8. Yn ystod yr ymgynghoriad 'Galwad Pellach am Safleoedd' a gynhaliwyd yn 2017, derbyniwyd cais ar gyfer 'Creu Parth Gwastraff' ar safle chwarel presennol yn Chwarel Pinfold Lane a Chwarel Stoney Beach. Er bod caniatâd yn bodoli ar gyfer gweithgareddau rheoli gwastraff ar y safle, mae'r ardal wedi cael ei amlygu o fewn Polisi EN21 sy'n rhestru safleoedd a ystyrir yn addas, mewn egwyddor, ar gyfer eu defnyddio i reoli gwastraff. O fewn darpariaeth bresennol yn y Sir a hyblygrwydd y polisiâu ar sail meini prawf yn y cynllun, ni ystyrir yn angenrheidiol darparu dyraniadau gwastraff penodol a manwl yn y CDLI.
- 5.9. Nid oes unrhyw safleoedd eraill wedi cael eu cynnig ar gyfer gweithgareddau rheoli gwastraff yn ystod yr ymgynghoriadau amrywiol ar gyfer galwad am safleoedd.

6. Adolygiad o bolisiâu CDU

- 6.1. Mae'r Cynllun Datblygu Unedol (CDU) yn cynnwys nifer o bolisiâu sy'n ymwneud â gwastraff. Mae'r polisiâu isod wedi cael eu hadolygu a thrafodir eu perthnasedd i'r CDLI yn Nhabl 3 isod.

⁴ TAN21 paragraff 4.23 <https://gov.wales/sites/default/files/publications/2018-09/tan21-waste.pdf>

Tabl 3: Polisiâu Gwastraff y CDU

Polisi	Sylw	Argymhelliad ar gyfer y CDLI
EWP6 Ardaloedd Chwilio ar gyfer Cyfleusterau Rheoli Gwastraff Newydd	Yn nodi ystod o ardaloedd lle byddai cyfleusterau gwastraff yn cael eu cefnogi. Mae'r rhestr yn cynnwys nifer o chwareli na ddefnyddir a safleoedd diwydiannol.	Dylid adolygu'r rhestr gan nad yw'r holl safleoedd yn briodol bellach.
EWP7 Rheoli Gwastraff yn Gynaliadwy	Yn gofyn i'r angen gael ei ddangos yn erbyn y Cynllun Gwastraff Rhanbarthol. Yn gofyn i gyfleusterau drin a/neu waredu gwastraff gan ddefnyddio'r dewis amgylcheddol gorau sy'n ymarferol.	Nid yw'r Cynllun Gwastraff Rhanbarthol yn berthnasol bellach ac mae'r egwyddor dewis amgylcheddol gorau sy'n ymarferol wedi cael ei dynnu o TAN 21. Y canolbwynt yn y TAN diwygiedig yw sicrhau y gwneir penderfyniadau yn unol â'r hierarchaeth gwastraff.
EWP8 Rheoli Datblygiadau a Gweithrediadau Gwastraff	Yn darparu ystod o feini prawf lle dylid asesu cynigion ar gyfer gwastraff yn eu herbyn.	Nid yw'n darparu maen prawf gofodol.
EWP9 Datblygiadau Newydd a Chyfleusterau Rheoli Gwastraff	Yn gofyn bod ceisiadau sy'n ymwneud â mwy na 2 hectar o dir angen gwneud darpariaeth ar gyfer cyfleusterau rheoli gwastraff.	Mae PCC yn gofyn i gyfleusterau a gofod digonol ar gyfer casglu, compostio ac ailgylchu deunyddiau gwastraff gael ei ymgorffori mewn dyluniad o unrhyw ddatblygiad.
EWP10 Aildefnyddio Gwastraff Datblygiadau	Yn gofyn am ystyriaeth o atal neu leihau gwastraff.	Mae PCC yn gofyn i ymdrechion atal gwastraff gael eu gwneud yn ystod y cam dylunio.
EWP11 Datblygu ar Safleoedd Tirlenwi neu Wrth eu Hymyl	Yn gofyn am ystyriaeth o risg y safle tirlenwi i'r datblygiad arfaethedig.	Mae PCC yn gofyn i awdurdodau cynllunio ystyried graddfa'r peryglon ar y wyneb ac islaw'r wyneb a all beri risg i iechyd a'r amgylchedd, er mwyn sicrhau nad yw datblygiadau

		newydd yn cael eu cyflawni heb ddealltwriaeth o'r risg a sefydlogrwydd tir sy'n gysylltiedig â safleoedd tirlenwi.
--	--	--

7. Y Strategaeth a Ffeirir

7.1. Mae'r Strategaeth a Ffeirir yn nodi'r polisi strategol ar gyfer rheoli gwastraff ym Mholisi Strategol STR15. Mae'r polisi yn nodi'r bwriad i sicrhau gostyngiad mewn gwastraff drwy'r system gynllunio ac i sicrhau bod gwastraff sy'n cael ei gynhyrchu, yn cael ei reoli'n gynaliadwy. Mae hefyd yn darparu canllawiau gofodol, sy'n arwain cyfleusterau gwastraff newydd tuag at safleoedd diwydiannol, wrth gydnabod bod angen i rai cyfleusterau gael eu lleoli tu allan i'r ffin ddatblygu.

Ffigwr 2:–Polisi Gwastraff Strategol

Strategic Policy STR 15
Waste Management

The LDP will facilitate the sustainable management of waste by:

- Securing opportunities to minimise the production of waste in all development and ensuring the sustainable management of waste once it has been produced;
- Supporting proposals for waste management which move the management of waste up the waste hierarchy;
- Supporting proposals which reduce the impacts of existing waste management on communities and the environment;
- Directing new waste management facilities towards existing and allocated industrial sites which are suitable for waste management facilities;
- Recognising that some types of waste facility may need to be located outside development boundaries;
- Protecting strategically important sites through the use of buffer zones where necessary; and
- Encouraging the co-location of heat producers and the development of heat networks through the identification of appropriate sites.

8. Polisiâu Gwastraff y CDLI

8.1. Mae'r polisiâu gwastraff arfaethedig o fewn y CDLI yn darparu'r polisiâu yn seiliedig ar feini prawf er mwyn asesu datblygiad rheoli gwastraff ac i arwain datblygwyr at safleoedd a gaiff eu hystyried yn dderbyniol, mewn egwyddor, ar gyfer defnydd rheoli gwastraff. Mae'r polisiâu yn cynnwys:-

- EW19 Rheoli Gwastraff yn Gynaliadwy
- EN20 Parth Clustogi Tirlenwi
- EN21 Lleoliadau ar gyfer Cyfleusterau Rheoli Gwastraff
- EN22 Meini Prawf ar gyfer Cyfleusterau a Gweithrediadau Rheoli Gwastraff

8.2. Byddai EN19 yn sicrhau bod darpariaeth ddigonol ar gyfer cyfleusterau rheoli gwastraff o fewn datblygiadau newydd, er mwyn rhwystro creu gwastraff lle bynnag bosibl, ac i sicrhau ei fod yn cael ei reoli'n gynaliadwy yn y lleoliad caiff ei greu, gan helpu Sir y Fflint i gyflawni'r targedau o fewn y Strategaeth Gwastraff Cenedlaethol.

EW19: Rheoli Gwastraff yn Gynaliadwy

Dylai cynigion ar gyfer datblygiadau newydd:

- a. ddangos sut fydd cynhyrchiant gwastraff yn cael ei ostwng yn ystod bob cam o'r datblygiad a sut all gwastraff sy'n codi, gael ei reoli mewn ffordd gynaliadwy, yn unol â'r hierarchaeth gwastraff.
- b. ddangos, lle bynnag mae hynny'n berthnasol, bod cyfleusterau a gofod digonol ar gyfer casglu, compostio ac ailgylchu deunydd gwastraff wedi cael eu gwneud.

- 8.3. Bydd unrhyw wrthdaro posibl rhwng datblygiadau sensitif a'r safle Tirlenwi Chwarel Parry a gymeradwywyd, yn cael ei leihau drwy osod parth clustogi tirlenwi 250 metr o amgylch y safle Tirlenwi, fel y nodir yn EN20 ac a ddangosir ar y map cynigion. Mae Cyfoeth Naturiol Cymru yn argymhell y dylai datblygiadau fod o leiaf 250 metr i ffwrdd o safleoedd tirlenwi.

EN20: EN20: Parth Clustogi Tirlenwi

Bydd rhagdybiaeth yn erbyn datblygiad sensitif o fewn parth clustogi tirlenwi. Bydd cynigion ar gyfer datblygiadau sensitif newydd o fewn 250m o safle Tirlenwi Chwarel Parry ond yn cael eu caniatáu, os gellir dangos na fydd unrhyw effeithiau andwyol o'r safle tirlenwi a ganiatawyd.

- 8.4. Pwrpas y polisi hwn yw darparu fframwaith ar gyfer asesu ceisiadau cynllunio ar gyfer cyfleusterau rheoli gwastraff ac ymestyn ar Bolisi Strategol STR15. Yn unol â maen prawf iv Polisi Strategol STR15, mae'r polisi hwn yn cyfeirio datblygwyr at safleoedd lle gall weithgareddau rheoli gwastraff fod yn addas. Mae rhan gyntaf y Polisi yn darparu rhestr o safleoedd cyflogaeth /Prif Ardaloedd Cyflogaeth presennol neu ddyranedig a ystyrir yn addas, mewn egwyddor, i'w defnyddio ar gyfer rheoli gwastraff. Bydd y safleoedd ar y map cynigion.

EN21: Lleoliadau ar gyfer Cyfleusterau Rheoli Gwastraff

Bydd cynigion ar gyfer rheoli gwastraff, ac eithrio safleoedd tirlenwi a rhesgompostio agored yn cael eu caniatáu yn gyffredinol, ar safleoedd cyflogaeth presennol neu ddyranedig, ar gyfer defnydd B2, yn amodol ar fodloni meini prawf a fanylir ym Mholisi EN22. Mae'r safleoedd a ystyrir yn addas, mewn egwyddor, i'w defnyddio ar gyfer rheoli gwastraff yn cynnwys:

- Chwarel Parry, Alltami
- Ystâd Ddiwydiannol Ysguboriau Elwo, Alltami
- Chwarel Pinfold Lane/Chwarel Stoney Beach, Alltami
- Depo Alltami, Alltami
- Ystâd Ddiwydiannol Manor, Bagillt
- Ystâd Ddiwydiannol Melin Brychdyn, Brychdyn
- Ystâd Ddiwydiannol Spencer
- Ystâd Ddiwydiannol Catheralls ac Ystâd Ddiwydiannol Pinfold, Bwcle
- Safle'r Hen Orsaf Bŵer, De Pont Sir y Fflint, Cei Connah
- Dock Road, Cei Connah
- Parc Diwydiannol Glannau Dyfrdwy (Ac Eithrio Porth y Gogledd a DARA)
- Parc Busnes Maes Glas, Maes Glas
- Dociau Mostyn, Mostyn
- Gorllewin Ffordd Caer, Queensferry
- Ystâd Ddiwydiannol Pentre, Pentre, Queensferry
- Ystâd Ddiwydiannol Queensferry, Pentre, Queensferry

- Parc Busnes Glendale, Sandycroft, Queensferry
- Ystâd Ddiwydiannol River Lane, Saltney
- Prince William Avenue, Sandycroft

Gall cynigion ar gyfer rheoli gwastraff tu allan i dir sydd heb eu rhestru uchod i'w defnyddio ar gyfer rheoli gwastraff, neu wedi'u dynodi ar gyfer defnydd B2, neu dir o fewn Dyranied Cyflogaeth neu Prif Ardal Cyflogaeth, gael caniatâd o fewn ffiniau anheddiad, os:

- Na ellir lleoli'r datblygiad arfaethedig ar brif safleoedd cyflogaeth, tir wedi'i ddyrannu ar gyfer defnydd cyflogaeth neu o fewn ffiniau datblygu, oherwydd graddfa neu natur y datblygiad arfaethedig, neu
- Bwriad y cynnig yw rheoli gwastraff sy'n cael ei greu'n gyfan gwbl ar y safle, neu
- Mae angen dynodedig ar gyfer y math o gyfleuster rheoli gwastraff dan sylw ac nid oes unrhyw safleoedd dyranedig o fewn pellter rhesymol, gan ystyried dalgylch y gwastraff, a
- Mae'r safle tu allan i'r AHNE; a
- Mae yna ddarpariaeth ar gyfer adfer y caniatâd defnydd sydd wedi dod i ben.

Bydd cynigion tu allan i ffiniau aneddiadau ond yn cael eu caniatáu os gellir dangos nad oes unrhyw safleoedd eraill ar gael, neu sy'n addas.

Bydd cynigion ar gyfer trin gwastraff bioddiddiadwy drwy gompostio, gan gynnwys treulio anaerobig a chompostio mewn cynhwysydd yn dderbyniol yn gyffredinol, ar safleoedd o fewn defnydd amaethyddol presennol, er mwyn delio â gwastraff bioddiddiadwy sy'n codi o'r defnydd hwnnw, neu ar safleoedd tu allan i'r AHNE.

8.5. Mae asesiad wedi'i gynnal i asesu holl safleoedd a restrir ym Mholisi EWP6 y CDU, holl ddyraniadau cyflogaeth PE1 (Atodiad 6), a holl Brif Ardaloedd Cyflogaeth PE2 (Atodiad 7) o ran eu haddasrwydd ar gyfer rheoli gwastraff. Mae asesiad codio lliw goleuadau traffig wedi cael ei gyflawni ar bob safle i ddangos pa safleoedd a fydd yn addas mewn egwyddor; coch yn annhebygol o fod yn addas, oren o bosibl yn addas, a gwyrdd yn addas ar gyfer gweithgareddau rheoli gwastraff. Roedd ystyriaethau ar gyfer pob safle yn cynnwys, os oedd y safle yn safle tir llwyd/gwyrdd, o fewn gorlifdir a'i beidio, os oedd defnydd gwastraff yn gweithredu o'r safle a natur y parc busnes/safle diwydiannol presennol.

8.6. Er y bydd Cyfoeth Naturiol Cymru yn rheoli gweithrediad cyfleusterau rheoli gwastraff drwy drefn trwyddedu amgylcheddol, ni fydd holl weithrediadau gwastraff yn cael eu rheoli drwy'r system drwyddedu, gan fod rhai gweithrediadau wedi'u heithrio. Felly, yn ystod y cam cais cynllunio, rhaid i geisiadau ddangos bod yn bosibl rheoli gweithrediadau yn ddigonol gan ystyried lleoliad y cyfleuster arfaethedig a'i agosrwydd at dderbynyddion sensitif. Byddai ceisiadau yn cael eu hasesu yn erbyn Polisi EN22 a pholisïau eraill o fewn y CDLI er mwyn sicrhau eu bod yn addas.

EN22: Meini Prawf ar gyfer Cyfleusterau a Gweithrediadau Rheoli Gwastraff

Bydd cynigion ar gyfer rheoli gwastraff yn cael eu caniatáu, os:

- Fydd y cynnig yn symud y rheolaeth o wastraff i fyny'r hierarchaeth gwastraff; neu
- Bod angen dynodedig am y math o gyfleuster ar lefel rhanbarthol, yn unol â Nodyn Cyngor Technegol 21; a
- Ni fydd unrhyw effeithiau gweledol andwyol, sylweddol; a
- Gall unrhyw effeithiau gweledol eu lliniaru'n foddhaol drwy dirlunio a storio gwastraff yn briodol; a
- Chydymffurfio gyda pholisïau eraill yn y cynllun.

Appendix 1: Permitted Waste Facilities in Flintshire: Source NRW 2018

Permit Number	Site Name	Town	Operator	Category
TB3590HJ	Parrys Quarry	Mold	Mold Investments Limited	C&D MRF
ZB3793HN	Dragon Works	Chester	City Metals (U K) Limited	End of life vehicle facility
YP3394FT	Road Runners	Chester	Road Runners	End of life vehicle facility
XP3694FN	The Old Transport Yard	Deeside	Mr M R Jackson	End of life vehicle facility
WP3394FG	Copart U K - Prince William Avenue	Chester	Copart U K Ltd	End of life vehicle facility
BP3493VS	Queensferry Car Breakers	Queensferry	Queensferry Car Breakers Limited	End of life vehicle facility
HP3794FP	Deeside Motorcycles	Connahs Quay	Stewart Williams	End of life vehicle facility
CP3794FR	Bagillt Car Spares	Bagillt	Bagillt Car Spares	End of life vehicle facility
YP3194FU	Flintshire Commercial Dismantlers	Holywell	Flintshire Commercial Dismantlers	End of life vehicle facility
ZP3694FV	Flintspeed Car & Commercial Dismantlers	Holywell	Frank Sheratt	End of life vehicle facility
BP3390VA	Standard Landfill Site	Buckley	Flintshire County Council	Hazardous Waste Landfill Site
WP3694FZ	Safetykleen Broughton	Deeside	Safety Kleen U K Ltd	Hazardous Waste Transfer Stations (including treatment)
BP3294VP	Mold Recycling Park	Mold	Flintshire County Council	Household Waste Recycling Centres
BP3291EB	Globe Way Recycling Park	Buckley	Flintshire County Council	Household Waste Recycling Centres
XB3597TM	Sandycroft Recycling Park	Deeside	Flintshire County Council	Household Waste Recycling Centres
BP3295VS	Queensferry Recycling Park	Deeside	Flintshire County Council	Household Waste Recycling Centres
BP3299VH	Dock Road Recycling Park	Deeside	Flintshire County Council	Household Waste Recycling Centres

Cynllun Datblygu Lleol Sir y Fflint i'w Archwilio gan y Cyhoedd 2015-2030
Papur Cefndir 5: Gwastraff – Medi 2019

BP3297EZ	Flint Recycling Park	Flint	Flintshire County Council	Household Waste Recycling Centres
DP3493LA	A Skip 2 U Ltd	Mold	A Skip 2 U Ltd	Household, Commercial and Industrial Transfer Stations
AP3694FE	Old Bridge Inn	Mold	G Scarfo & Son	Household, Commercial and Industrial Transfer Stations (including treatment)
YP3894FR	Standard Road Transfer Station	Buckley	Flintshire County Council	Household, Commercial and Industrial Transfer Stations (including treatment)
JP3994FX	West Penine Recycling Transfer Station	Buckley	W P R (U K) Ltd	Household, Commercial and Industrial Transfer Stations (including treatment)
VP3794FN	A S H Bretton Recycling Centre	Bretton	Alan's Skip Hire Limited	Household, Commercial and Industrial Transfer Stations (including treatment)
BP3391EL	Brookhill Transfer Station	Buckley	Flintshire County Council	Household, Commercial and Industrial Transfer Stations (including treatment)
BP3797SZ	Ewloe Waste Transfer Station	Mold	Thornccliffe Building Supplies Ltd	Household, Commercial and Industrial Transfer Stations (including treatment)
WB3493HU	Alltami Depot	Alltami	Flintshire County Council	Household, Commercial and Industrial Transfer Stations (including treatment)
FP3194FH	Queensferry Depot	Sandycroft	S P Power Systems Ltd	Household, Commercial and Industrial Transfer Stations (including treatment)
CB3233AV	T J's Skip Hire Ltd	Deeside	T J's Skip Hire Ltd	Household, Commercial and Industrial Transfer Stations (including treatment)

Cynllun Datblygu Lleol Sir y Fflint i'w Archwilio gan y Cyhoedd 2015-2030
Papur Cefndir 5: Gwastraff – Medi 2019

JB3932RM	Paperback Collection & Recycling Ltd	Deeside	Paperback Collection & Recycling Limited	Household, Commercial and Industrial Transfer Stations (including treatment)
DB3332RH	C T Skip Hire	Deeside	C T Skip Hire	Household, Commercial and Industrial Transfer Stations (including treatment)
FP3198SG	Materials Recycling And Recovery Facility	Deeside	Orchid Shotton Ltd	Household, Commercial and Industrial Transfer Stations (including treatment)
TB3397TD	Roadrunner Waste Ltd	Bagillt	G. T Roberts & Son Limited	Household, Commercial and Industrial Transfer Stations (including treatment)
CB3593HF	Unit 103		Parry And Evans Limited	I&C MRF
TP3894FN	Waen Farm	Mold	Edward Stephens	Inert Landfill Site
LP3394FD	Cefn Mawr Quarry Landfill	Mold	Castle Cement Padeswood Ltd	Inert Landfill Site
HP3394FV	Bagillt Landfill Site	Bagillt	Veolia Es Uk Ltd	Inert Landfill Site
WP3594FF	S P A Davies & Sons	Mold	S P A & J L Davies	Metal Recycling Site
CP3494FZ	Spencer Ind Est Scrapyard	Buckley	Spencer Industrial (North Wales) Ltd	Metal Recycling Site
EP3694FR	P Dobbins Chester Ltd	Saltney	P Dobbins Chester Limited	Metal Recycling Site
GP3494FW	J Chadwicks Scrapyard	Deeside	S J Chadwick	Metal Recycling Site
WP3194FL	Chadwicks Metal Processing Facility	Deeside	Chadwicks	Metal Recycling Site
GP3894FB	Trident Metals	Deeside	Trident Commercial Holdings Limited	Metal Recycling Site
HP3594FD	Flintshire Commercial Dismantlers	Holywell	Flintshire Commercial Dismantlers	Metal Recycling Site
GP3294FZ	S J Chadwicks Greenfield	Greenfield	J Chadwicks	Metal Recycling Site
ZP3994FJ	Delyn Metals Ltd	Holywell	Delyn Metals Ltd	Metal Recycling Site
NP3894FK	Point Of Ayr Treatment Facility	Ffynnongroew	Delyn Metals Ltd	Metal Recycling Site
FB3497TK	Fron Haul Quarry	Mold	Breedon Southern Limited	Mining and extractive waste facility

Cynllun Datblygu Lleol Sir y Fflint i'w Archwilio gan y Cyhoedd 2015-2030
Papur Cefndir 5: Gwastraff – Medi 2019

SP3894FZ	Maes Y Grug Landfill	Mold	B Griffiths	Non-Hazardous Landfill Site
BP3894FD	Sea View Farm 1	Deeside	D Morgan Plc	Non-Hazardous Landfill Site
SP3394FL	Sea View Farm 2	Deeside	D Morgan Plc	Non-Hazardous Landfill Site
BP3298VK	Greenfield Recycling Park	Greenfield	Flintshire County Council	Open Windrow Composting; Household Waste Recycling Centres
KP3294FW	P H S North Wales	Buckley	Personnel Hygiene Services Ltd	Transfer of clinical waste
BP3594FN	Padeswood Landfill	Mold	Castle Cement Padeswood Ltd	Unknown
JB3034RN	Cambrian Quarry	Gwernymynydd	Ash Resource Management (Cambrian Quarry) Ltd	Use/treatment of inert waste for land reclamation or construction
FB3734RP	P M Dromgoole & Sons Agricultural Ltd	Nr Mold	P M Dromgoole & Sons Agricultural Ltd	Use/treatment of inert waste for land reclamation or construction
MB3733RU	Alltami Soil & Aggregate Recycling Facility	Mold	Brock Plc	Use/treatment of inert waste for land reclamation or construction
FB3735AT	Cambrian Concrete	Near Mold	Lloyd Holdings (North West) Ltd	Use/treatment of inert waste for land reclamation or construction
UB3697TL	Glasfryn Yard		Gary Catton Haulage Ltd	Use/treatment of inert waste for land reclamation or construction
KB3433RY	Alan's Skip Hire Ltd	Deeside	Alan's Skip Hire Ltd	Use/treatment of inert waste for land reclamation or construction
FB3897TV	Maes Mynan Quarry	Mold	Breedon Southern Limited	Use/treatment of inert waste for land reclamation or construction
DB3435RA	Maes Mynan Quarry	Mold	Lloyds Quarries Limited	Use/treatment of inert waste for land reclamation or construction

**Appendix 2: Waste Managed by Waste Facilities in Flintshire in 2017-18:
Source NRW (tonnes)**

Facility Type	Total		Total
CA Site	35958	Inert Waste Transfer	18435
Car Breaker	31433	Material Recycling Facility (MRF)	227545
Clinical Waste Transfer	400	Metal Recycling	18981
Co-Incinerator	93764	Mobile Plant - Unknown	7400
Deposit of waste to land (recovery)	206280	Non Hazardous LF	594
Haz Waste Transfer	2662	Non-Haz Waste Transfer	392099
HCl Waste TS + treatment + asbestos	43633	Physical Treatment	21453
WEEE treatment facility	20537	Grand Total (Tonnes)	1,121,175

Recorded Origin	Total	Recorded Origin	Total
Aberdeenshire	884	Newcastle-under-Lyme	38
Angus	9152	Newport	1876
Aylesbury Vale	18114	Non UK destination	395
Birmingham	17772	Norfolk	340
Blackpool	4	North Ayrshire	14602
Bolton	2191	North East Derbyshire	1
Bradford	1053	North East Lincolnshire	445
Brent	1698	North Somerset	27
Bristol, City of	3176	North Tyneside	23
Bromsgrove	226	North Yorkshire	1684
Burnley	96	Northamptonshire	208
Caerphilly	726	Northumberland	405
Calderdale	0.1	Nottingham	1158
Cambridge	404	Nottinghamshire	1
Cambridgeshire	1	Other	3891
Canterbury	1191	Oxford	363
Cardiff	134	Oxfordshire	709
Carlisle	89	Pembrokeshire	604
Carmarthenshire	1672	Perth and Kinross	29
Ceredigion	345	Plymouth	1
Cherwell	10768	Powys	85
Cheshire East	44669	Reading	926
Cheshire West and Chester	108408	Renfrewshire	4
Chesterfield	16	Rhondda Cynon Taf	13
City of London	0.7	Richmond upon Thames	3
Conwy	14523	Rotherham	5383
Cornwall	51	Rushmoor	52
Coventry	0.1	Salford	1
Craven	7	Sandwell	0.1

Cynllun Datblygu Lleol Sir y Fflint i'w Archwilio gan y Cyhoedd 2015-2030
Papur Cefndir 5: Gwastraff – Medi 2019

Croydon	7902	Scarborough	10117
Cumbria	5	Scotland	313
Denbighshire	41805	Sheffield	5
Derby	6732	Shropshire	311
Derbyshire	4315	Slough	0.1
Doncaster	2	South Lanarkshire	28
Dorset	29485	South Northamptonshire	9425
East Ayrshire	162	South Oxfordshire	388
East Lothian	2265	South Somerset	3106
East Renfrewshire	1854	St. Helens	200
East Staffordshire	23	Staffordshire	1122
East Sussex	488	Staffordshire Moorlands	10812
Edinburgh, City of	343	Stirling	1491
Flintshire	353077	Stoke-on-Trent	1550
Gloucestershire	1848	Stratford-on-Avon	326
Greater Manchester	505	Suffolk	19
Greenwich	113	Surrey	240
Guildford	703	Swansea	81
Gwynedd	10142	Swindon	113
Halton	190	Tamworth	1921
Hampshire	1	Telford and Wrekin	2855
Harrow	8996	Tendring	141
Hertfordshire	2533	Test Valley	1354
Hinckley and Bosworth	3682	Tewkesbury	40
Hyndburn	645	Thanet	2800
Isle of Anglesey	1479	Tonbridge and Malling	346
Kent	5117	Torridge	92
King's Lynn and West Norfolk	128	Trafford	209
Kingston upon Thames	44	Vale of Glamorgan	618
Kirklees	937	Wales	1330
Knowsley	4755	Walsall	5
Lancashire	27553	Warrington	18200
Lancaster	146	Warwickshire	1544
Leeds	325	West Lancashire	5
Leicester	114	West Midlands	1752
Leicestershire	679	West Yorkshire	2066
Lewisham	19	Wigan	10822
Lincolnshire	1172	Wiltshire	16
Liverpool	31073	Winchester	128
Luton	0.1	Wirral	71280
Manchester	13724	Wokingham	0.1

Cynllun Datblygu Lleol Sir y Fflint i'w Archwilio gan y Cyhoedd 2015-2030
Papur Cefndir 5: Gwastraff – Medi 2019

Medway	0.1	Wolverhampton	1
Merseyside	8649	Worcestershire	1034
Mid Sussex	1761	Wrexham	48729
Milton Keynes	2186	Wychavon	2467
Monmouthshire	7	York	35
Newcastle upon Tyne	297	(unknown)	63126
Grand Total			1121175

**Appendix 3: Waste Removed from Flintshire Waste Facilities in 2017-18:
Source NRW (Tonnes)**

Destination WPA	Tonnes	Destination WPA	Tonnes
Barnsley	23	Liverpool	24109
Bedford UA	1482	Manchester	56751
Birmingham City	1410	Neath Port Talbot	185
Bridgend	12141	Newport	18
Brighton and Hove	829	Norfolk	14366
Bristol City	52	North Lincolnshire	52
Buckinghamshire	2	North Yorkshire	1135
Bury	270	Northamptonshire	1085
Cambridgeshire	133	Northern Ireland	40
Cheshire East	43031	Northumberland	1614
Cheshire West and Chester	86114	Nottingham City	3211
Conwy	4792	Nottinghamshire	6119
Cornwall UA	2	Outside UK	78705
Corporation of London	7	Oxfordshire	1
County Durham	1792	Powys	142
Cumbria	930	Rotherham	281
Darlington	27	Rutland	3480
Denbighshire	4699	Scotland	123
Derbyshire	45	Sheffield	25
Doncaster	951	Shropshire	4707
Dorset	4	St Helens	257
East Riding of Yorkshire	22	Staffordshire	364
Essex	241	Stockport	2053
Flintshire	172603	Stoke-on-Trent	17
Gloucestershire	20	Surrey	184
Gwynedd	14	Tameside	13
Halton	80	Vale of Glamorgan	3
Hampshire	9	Warrington	1961
Hartlepool	117	Warwickshire	123
Hertfordshire	909	West Berkshire	286
Isle of Anglesey	7411	Wirral	953
Kent	1149	Worcestershire	31
Lancashire	26673	WPA Not Codeable	7262
Leeds	982	Wrexham	49608
Lewisham	7	York, City of	336
Lincolnshire	611	(unknown)	30516
Grand Total			659697

Appendix 4: Local Authority Waste Collected in North Wales

Local Authority	2008/ 2009	2009/ 2010	2010/ 2011	2011/ 2012	2012/ 2013	2013/ 2014	2014/ 2015	2015/ 2016
Conwy	77,200	72,500	67,800	67,200	66,800	63,900	64,300	63,523
Denbighshire	48,800	44,400	44,000	42,100	43,500	42,600	42,000	42,333
Flintshire	87,900	87,700	88,300	86,900	88,100	89,900	84,500	85,456
Gwynedd	79,900	80,300	77,600	76,400	77,000	77,000	73,100	73,259
Isle of Anglesey	44,500	43,200	43,800	43,200	41,900	39,500	39,600	40,268
Wrexham	82,200	79,000	80,100	77,400	75,800	80,600	80,100	83,271
North Powys	41,200	39,800	38,100	38,000	39,300	36,800	36,000	34,441
Total	461,700	446,900	439,700	431,200	432,400	430,300	419,600	422,551

Local Authority	2016/ 2017	2017/ 2018
Conwy	62,560	60,054
Denbighshire	44,323	43,988
Flintshire	86,256	82,718
Gwynedd	75,312	70,378
Isle of Anglesey	38,831	37,562
Wrexham	87,886	85,118
North Powys	32,838	27,925
Total	428,006	407,743

Appendix 5: Planning Applications for Waste Management since the UDP was adopted 28 September 2011

Application reference	Location	Description	Decision	Date
36896	Alan's skip hire Broughton Mills Road	Variation of Condition No.3 attached to planning permission ref: 34727	Withdrawn	20/06/2012
43948	Pinfold Lane Quarry	Integrated Waste Management Facility	Refused	03/11/2011
44960	Spencer Industrial Estate, Globe Way	Retrospective application for a recycling and waste transfer centre	Withdrawn	13/05/2013
45069	Delyn Metals Point Of Ayr, Talacre	Metal recycling and recovery plant for end-of-life vehicles, ferrous and non-ferrous metals, redundant and scrap caravans and roof and wall panels	Refused	22/01/2013
48179	CRT Antelope Industrial Estate	Change of use of redundant warehouse (Use Class B2) into Recycling	Approved	01/11/2011
48227	Greenfield Compost site	Continuation of existing green waste composting operation	Approved	04/11/2011
48349	Tata Steel landfill	Planning Consent Reference: No: P4/5/19737 Variation Request	Approved	26/09/2011
48496	Delyn Metals Gwespr	Variation of condition no.1 of planning permission ref: 1240/90 to allow storage up to 8m higher than base datum point	Refused	18/01/2012
48649	Roadrunner Dee Bank Industrial Estate	Retrospective application for the open air storage of empty skips, equipment and product.	Approved	01/11/2011
48702	Brookhill Landfill, Pinfold Lane Industrial Estate	Retention of existing transfer compound and proposed waste transfer slabs for green waste and food waste	Approved	04/11/2011
49053	TJ's Skips Unit 26 Deeside Industrial Estate	Change of use for use of building as waste transfer station involving alteration to current access door to the hangar	Approved	08/02/2012

Cynllun Datblygu Lleol Sir y Fflint i'w Archwilio gan y Cyhoedd 2015-2030
Papur Cefndir 5: Gwastraff – Medi 2019

49165	CT Skip Hire Drome Road	Change of use to allow development of small scale waste transfer	Approved	16/01/2012
49435	Dromgoole Mold Road	Continuation of Inert Waste Recycling Operation	Approved	30/05/2013
49474	Airbus WTS Chester Road	Erection and operation of waste transfer station and associated works	Approved	22/05/2012
49617	Scarfo and Sons Station Lane	Construction of waste transfer building and continuation of non-hazardous waste management operation	Approved	28/03/2013
49740	Spencer Industrial Estate,	Construction of an education centre with continuation of activities at adjoining materials recycling facility, improvements to existing office/staff facilities building and retention of car park compound	Approved	02/10/2012
49815	Cheshire Farm Oakenholt Lane	Erection of a building cover over existing concrete cattle feeding yards (to comply with Clean Water Regulations and to allow farm waste plastic recycling).	Approved	05/10/2012
49908	Alan's skip Hire, Great Bear Distrubtion, Weighbridge Road	Retention of the use of land for the reception and processing of construction and demolition waste together with the raising of land levels using fill material arising from the processing operation	Approved	04/12/2012
50052	TES Factory Road	Construction of an anaerobic digestion plant for the purposes of waste treatment and generation of 500 kW renewable energy. Consisting of a reception building, 2 digestion tanks, a digestate product storage tank, 3 delivery storage tanks, 2 pasteurisers, CHP generation equipment including an exhaust stack, electrical grid connection infrastructure, an auxiliary shielded flare, odour management equipment and concrete bunding walls.	Withdrawn	30/10/2012
50249	TES Factory Road	Construction of an anaerobic digestion plant for the purposes of waste treatment and generation of 500 kW renewable energy. Consisting of a reception building, 2 digestion tanks, a digestate product storage tank, 3 delivery storage tanks, 2 pasteurisers, CHP generation equipment including an exhaust stack, electrical grid connection infrastructure, an auxiliary shielded flare, odour management equipment and concrete bunding walls.	Approved	10/04/2013

Cynllun Datblygu Lleol Sir y Fflint i'w Archwilio gan y Cyhoedd 2015-2030
Papur Cefndir 5: Gwastraff – Medi 2019

50298	Mostyn WWTW	Erection of replacement main inlet screen and subsequent demolition of	Approved	07/02/2013
50301	Alan's Skips Broughton Industrial Estate,	Change of use to the storage of skips/machinery and associated vehicles	Approved	26/04/2013
50377	CRT, Antelope Industrial Estate	Erection of a steel open fronted building	Approved	14/03/2013
50665	Gary Catton Haulage Weighbridge Road	Change of use of land from former haulage yard and storage and distribution site to a facility for the reception, processing, storage and sale of construction and demolition wastes and recycled aggregates together with the provision of a garage/workshop and weighbridge and siting of a portable building	Approved	16/07/2013
50695	Cambrian Quarry	Restoration of Cambrian Quarry by the importation and recycling of inert materials	Approved with s106	28/04/2014
50809	1 metre land raise, land off Denbigh Road	Landfill to raise level by approximately 1m and subsequent raising of height of agricultural building	Approved	21/02/2014
51299	Scarfo and Sons Station Lane	Amendments to restoration profile permitted under Ref: 043990	Approved	22/01/2014
51431	Prince William Avenue CA Site	Modification of approved Household Waste Recycling Centre	Withdrawn	12/02/2014
51499	Lancashire Fuels 4U Riverside	Application for the retention of existing B2 and B8 uses, together with all existing permitted uses and change of use to include sui generis use to import, store, recycle, and process of waste for the manufacture of biomass fuel and solid recovered fuel pellets and briquettes.	Refused	07/06/2016
51787	Prince William Avenue	Application for civic amenity site constituting amendments to a previously approved scheme.	Approved	15/04/2014
51795	Delyn Metals Point Of Ayr	Use of land as recycling and recovery centre for end-of-life vehicles, ferrous and non-ferrous metals; redundant/scrap caravans, receipt and storage other salvaged inert materials, including salvaged building supplies and siting of 1No. caravan for security.	Approved with s106	05/12/2016
51924	Warwick Chemicals	Combined heat and power biomass plant	Approved	13/08/2014

Cynllun Datblygu Lleol Sir y Fflint i'w Archwilio gan y Cyhoedd 2015-2030
Papur Cefndir 5: Gwastraff – Medi 2019

52212	Refgas Whittle Close, Factory Road	Retention of a Biomass Gasification CHP Plant and associated equipment	Approved	23/09/2014
52359	Thorncliffes Ewloe Barns	Planning application for the extension of the existing waste management site, together with the retention of a new waste transfer building and product storage bays, weighbridge and weighbridge office building.	Approved	14/10/2015
52364	Pinfold Lane Quarry	Development of an Integrated Waste Management Facility comprising a mixed waste treatment facility, a construction waste materials recycling facility, and a contaminated soils treatment facility.	Approved with s106	23/01/2018
52626	Parc Adfer, Weighbridge Road, Wheelabrator	The construction and operation of an Energy Recovery Facility and ancillary facilities, comprising offices and welfare facilities, visitor centre, bottom ash recycling and maturation facilities, access roads and weighbridge facilities, electrical compound, together with peripheral landscaping and security fencing. The proposals also make provision for a rail connection, sidings and associated infrastructure.	Approved	09/05/2015
52927	Padewood Cement	Erection of a solid recovered fuel reception facility	Approved	07/01/2015
53393	Aeternis Energy	Installation and operation of a mobile advanced thermal treatment plant (ATT) and associated operations in existing buildings comprising a 1MW pyrolysis unit and associated gas engine.	Approved	04/08/2015
53852	Greenfield CA site	To construct and operate a waste handling depot including the erection of a portal framed building for the bulking up and transfer of domestic waste, kerbside recyclable material and food waste, new internal access tracks, a storage area for the bulking up and transfer of gully and sweeper arisings, a storage area for the bulking up and transfer of wood waste, a rock salt storage area, site lighting, boundary treatments and other ancillary development.	Approved	12/10/2015
54201	Parry's Quarry	Erection of waste transfer building, weighbridge, weighbridge office, access road and ancillary development	Approved	24/03/2016

Cynllun Datblygu Lleol Sir y Fflint i'w Archwilio gan y Cyhoedd 2015-2030
Papur Cefndir 5: Gwastraff – Medi 2019

55187	Massey Metals River Lane	Change of use application to scrap metal merchants to comprise ferrous and non-ferrous metal recycling including end of life vehicles	Approved	01/08/2016
55411	Thorncliffes Ewloe Barns	Erection of waste transfer building, ancillary development and storage bays, formation of additional hard standing, retention of boundary fencing and re-profiling of the southern mound.	Approved	15/03/2017
56057	Massey Metals	Erection of steel portal frame extension to existing end of life facility	File Closed	20/01/2017
56060	Buckley CA Site remodelling	The application is to re-model an existing Household Waste Recycling	Approved	28/11/2016
56074	Nercwys CA Site remodelling	Application to re-model the existing Household Waste Recycling Centre	Approved	12/01/2017
56547	Oakenholt CA Site	Construction and operation of a household recycling centre	Approved	04/04/2017
57345	Crag Hill Estates Ltd Welsh Road	Temporary Use of Land for Stockpiles of Inert Fill together with Associated Contractors Compound	Withdrawn	11/08/2017
58270	Logik WTE Ltd Weighbridge Road	Construction and operation of a waste management facility for the management of municipal, commercial and industrial waste, comprising: a waste reception hall with ground level pit tipping area, sorting hall with associated equipment for separation and processing, a refused derived fuel (RDF) hall, control room, electrical room and workers facilities, anaerobic digestion tank farm and associated infrastructure	Approved	09/08/2018
58695	Massey Metals River Lane	Single storey portal frame extension to existing end of life (EOL) facility and canopy to existing building	Approved	28/11/2018

Appendix 6: Assessment of PE1 Sites for consideration for waste uses for EN21

Ref no.	Settlement / Location	PE2 policy reference	Site	Flood plain	Brownfield/ Greenfield	Comments	Suitable for waste uses?
1	Broughton	PE.16	Chester Aerospace Park	C1	Greenfield but historically PDL ⁵	Potential guidance market segment uses include : High Quality Business use; Research and Technology/Science uses; Specialist Industrial uses for Specific user.	Not Suitable The nature of this employment allocation doesn't lend itself to waste uses.
2	Broughton	-	Manor Lane/Hawarden Park Extension	Small part of site includes B and C2	Greenfield	Identified by Airbus as a preferred site for provision of a supplier park.	Not suitable.
3	Broughton	-	Warren Hall	No	Greenfield	Strategic Site in the LDP for high quality business park, aerodrome safeguarding issues with bird strike concerns and proximity to airbus, not compatible for waste uses.	Not suitable
4	Buckley	-	Drury New Road	No	Greenfield	Expansion land for Glen Dimplex.	Not suitable.
5	Deeside	PE2.11	Land to North West of Garden City	C1	Greenfield but some areas historical PDL	It may happen through the open market but it's not a use we wish to encourage on Northern Gateway as the emphasis of the use on this use is housing so the preference would be to direct away from the Northern Gateway site.	Not suitable.
6	Greenfield	PE2.15	Greenfield Business Park, Phase II	C1	Greenfield but historically PDL	Appears to expansion land for operations at Kingspan. Issues with flood risk and contamination.	Parts of the site are potentially suitable
7	Greenfield	PE2.15	Greenfield Business Park, Phase III	C1	Greenfield but historically PDL	Adjacent to existing Civic Amenity/HWRC and open windrow compost site, would have to overcome flood issues at the application stage	Suitable

⁵ PDL – Previously developed Land

Cynllun Datblygu Lleol Sir y Fflint i'w Archwilio gan y Cyhoedd 2015-2030
Papur Cefndir 5: Gwastraff – Medi 2019

8	Mold	PE2.17	Broncoed Ind. Est.	No	Greenfield but within an existing business park	Waste uses would conflict with surrounding residential uses and B1 offices adjacent to the site	Not suitable
9	Mold	PE2.18	Mold Business Park	No	Greenfield	Not an appropriate location near Tate & Lyle and nearby housing.	Not suitable
10	Mostyn	PE2.20	Adjacent Mostyn Docks	Partially in C1	Greenfield now but historically PDL	Potentially suitable if land is available and would have to overcome flooding issues at application stage	Suitable
11	Queensferry	Not included but adjacent to PE2.21	Chester Road East	C1	Greenfield but historically PDL	Potentially suitable if proximity to housing and trade uses nearby doesn't not preclude development of waste facility.	Suitable
12	Rhydymwyn	PE2.24	Antelope Ind. Est.	C2	Brownfield, existing industrial estate	Noise sensitive site – indoor activities preferable as historical issue with waste management Would have to overcome flooding at application stage	Potentially suitable
13	Saltney	PE2.25	River Lane	No	Brownfield	The site is partly in use for open storage' with 'Road Runners independent Vauxhall Specialists' occupying the site. However their use appears quite low key and the site may be vacated for a use which utilises all of the site. The site doesn't appear to be within a flood risk zone but it is adjacent to the SAC and SSSI.	Suitable
14	Shotton	PE2.30	Rowley's Drive	C1	Greenfield but historically PDL	The nature and scale of this allocation and wider PEA ⁶ doesn't lend itself to waste uses.	Not suitable.

⁶ PEA – Principal Employment Area

Appendix 7: Assessment of PE2 Sites for consideration for waste uses for EN21

Ref No.	Site	Employment Land Allocation reference	Flood Plain?	Brownfield/ Greenfield	Comments	Suitable For Waste uses?
PE2.1	Ewloe Barns (Industrial Estate), Alltami	-	No	Brownfield	PEA ⁷ of trade and workshop accommodating a range of occupiers, including some 'bad neighbour' uses. Most land within the area appears to be in use leaving limited opportunities for additional waste uses. However, opportunities may arise during the plan period and should this be the case waste uses would be suitable on this site.	Yes, existing waste uses operate here
PE2.2	Alltami Depot, Alltami	-	No	Brownfield	Permission was granted for the development of an Integrated Waste Management Facility in 2018 adjacent to the PEA so PEA would seem a logical location for further waste uses.	Yes, existing waste uses operate here
PE2.3	Manor Industrial Estate, Bagillt	-	C1	Brownfield, industrial estate	PEA is a key source of budget and moderate quality workshop space for local micro businesses. Area is fully developed and tightly bound by the A548 and railway.	Yes but would have to overcome flooding at application stage
PE2.4	Broughton Mill, Broughton	-	C1	Brownfield	PEA accommodates a number of 'bad neighbour' waste processing uses which could not be housed on nearby Hawarden Industrial Park. All land and property is in use. Further expansion is not possible without encroaching on adjacent agricultural land, including landfill and Green Barrier land. Appears to be no land in PEA for further waste uses but opportunities may arise during the plan period and should this be the case waste uses would be suitable on this site.	Yes, existing waste uses operate here so suitable if land becomes available
PE2.5	Catheralls Industrial Estate and Pinfold Industrial Estate, Buckley	-	No	Brownfield	The primary industrial estate for Buckley, accommodating a range of established businesses in good quality, modern units. It also provides a substantial workshop scheme, accommodating local start-ups and micro firms. Close to housing, SSSI and SAC. However, former Brookhill Landfill located here with a number of noisy uses (Joiners and builders merchant).	Yes, suitable for waste uses, should land become available during the plan period

⁷ PEA – Principal Employment Area

Cynllun Datblygu Lleol Sir y Fflint i'w Archwilio gan y Cyhoedd 2015-2030
Papur Cefndir 5: Gwastraff – Medi 2019

PE2.6	Drury Lane Industrial Estate, Buckley	-	No	Brownfield	PEA is fully developed and tightly defined. A small, but well occupied local employment area. Now functions as a trade and retail park rather than an industrial location. All surrounding land is either housing or protected Greenspace (Policy L3) land. The nature of this PEA doesn't lend itself to waste uses.	Not suitable
PE2.7	Little Mountain Industrial Estate, Buckley	-	No	Part brown and greenfield	Premises and expansion land for two large employers (Glen Dimplex and Buckley Foods), although the Buckley Foods land is subject to an app for a garden centre.	Not suitable
PE2.8	Spencer Industrial Estate, Buckley	-	No	Brownfield	All land and premises within the estate is in use. However, opportunities may arise during the plan period and should this be the case waste uses would be suitable on this site.	Yes, existing waste uses operate here
PE2.9	Evans Business Centre, Chester West	-	C1	Brownfield, existing business park	PEA comprises the modern Evans Business Centre (34 office suites and 23 workshops) plus several larger, good quality, self-contained office and industrial properties to the south east. No potential within the County for expansion.	Not suitable
PE2.10	Dock Road, Connah's Quay	-	Parts of site in C1	Brownfield PDL ⁸	Budget quality, local industrial estate serving Connah's Quay, and adjacent settlements, and particularly providing car garage and motor trade services. PEA is the location of a proposed LDP solar farm allocation. Suitable if a site can be found within the PEA and constraints can be overcome.	Yes, historical interest in this site for waste uses. Would have to overcome flood issues at the application stage
PE2.11	Deeside Industrial Park, DARA and Northern Gateway	-	Parts of the site in C1	Mostly PDL some greenfield	There may be opportunities in DIP ⁹ . It's not a use we wish to encourage on Northern Gateway and DARA will become a repair hub for the F-35 aircraft. Waste uses would generally not be considered acceptable in these areas	Yes but just restricted to the DIP and steer waste development away from DARA and Northern Gateway
PE2.12	St Davids Park, Ewloe	-	No	Existing business park, office use	High quality business park. Not suitable.	Probably not
PE2.13	Ashmount Industrial Estate, Flint	-	Part in B1 and C2	Existing industrial estate, PDL	Major industrial estate accommodating several major employers, and also providing a diverse range of smaller business accommodation, including self-contained and serviced office suites with some vacant sites.	May be suitable provided the attractiveness of the PEA to major employers wasn't undermined.

⁸ PDL – Previously Developed Land

⁹ DIP – Deeside Industrial Park

Cynllun Datblygu Lleol Sir y Fflint i'w Archwilio gan y Cyhoedd 2015-2030
Papur Cefndir 5: Gwastraff – Medi 2019

PE2.14	Castle Park/ Ashmount Industrial Centre, Flint	-	Eastern sliver of the site in B and C2	Existing Industrial Estate, PDL	Secondary industrial estate in Flint, which generally meets the needs of established micro and small businesses. The quality of premises varies and the location has been a previous focus of regeneration spending. Bounded by housing and Flint Castle to the south, railway line to the west and areas of high landscape quality associated with Flint Marsh and the Dee Estuary (SSSI/RAMSAR/SPA) Constraints may prove hard to overcome.	Waste use would appear to conflict with existing uses but would be assessed at the application stage should an application be submitted speculatively
PE2.15	Greenfield Business Park, Greenfield	PE1.6 and PE1.7	C1	Existing business park	Large established industrial area containing key occupiers Kingspan, FCC, and Westbridge Furniture. 5.6ha of land in PEA is vacant and allocated within LDP for employment purposes.	Yes, existing waste uses on business park but would have to overcome flood issue
PE2.16	Hawarden Industrial Park, Chester Aerospace Park and Hawarden Airport,	PE1.1	C1	Brownfield PDL	Major manufacturing facility for Airbus including active airport facilities. Area also includes a modern industrial estate in the west which is continuing to grow, in part at least, as a supplier park for Airbus. This PEA contains prime sites suitable for attracting inward investment into the County.	No, not suitable.
PE2.17	Broncoed Industrial Estate, Mold	PE1.8	No	Greenfield but within existing business park	Small, modern and successful local employment area. Provides reasonable quality workshop premises to a range of local firms. Of particular value are the office units to the rear. Despite their backland position, these are a relatively unique property resource in Mold.	No, not suitable.
PE2.18	Mold Business Park, Mold	PE1.9	No	Greenfield	Compact office and industrial park, prominently located off the A494 containing NHS, GP Fire and Security.	No, not suitable.
PE2.19	Mold Industrial Estate, Mold	-	Small part in B and C2	Existing industrial estate	Fully developed and established business park and industrial estate, split into two sections along Queen's Lane, bounded by residential and the A494. PEA meets local property needs particularly for offices and mid-sized industrial premises.	Waste use would appear to conflict with existing uses but would be assessed at the application stage should an application be submitted speculatively
PE2.20	Mostyn Docks, Mostyn	PE1.10	Part of the site in B, C1 and C2	Brownfield and PDL	Warwick International obtained planning permission for a combined heat and power plant on EM1(9) but it wasn't developed. The plant would have provided steam and electricity	Potentially suitable if land is available

Cynllun Datblygu Lleol Sir y Fflint i'w Archwilio gan y Cyhoedd 2015-2030
Papur Cefndir 5: Gwastraff – Medi 2019

					for use by the adjacent Warwick International chemicals plant and for export to the National Grid.	
PE2.21	Pentre Industrial Estate, Pentre	PE1.11	C1	Greenfield but historically PDL	Modern industrial and office estate. Range of manufacturing facilities and warehouses in the west and light industrial units, plus substantial areas of cleared brownfield land, in the east.	Potentially suitable.
PE2.22	Queensferry Industrial Estate, Pentre	-	C1	Brownfield, existing industrial estate	Established industrial estate, comprises large manufacturing facilities to the rear and smaller light industrial space on the Chester Road frontage. All land in use except for EM1.21 Chester Road East.	Yes, existing waste uses would need to overcome flooding at application stage
PE2.23	Expressway Business Park, Queensferry	-	C1	Existing business park – higher end	Small, low density rural industrial estate, comprising five modern industrial units, most in trade use, backing on to the A494.	The nature and scale of this PEA doesn't lend itself to waste uses
PE2.24	Antelope Industrial Park, Rhydymwyn	PE1.12	C2	Brownfield, existing industrial estate	Linear employment area comprising a small group of moderate quality, mid-sized industrial units in a low density estate containing key occupiers including, The Mold Hygiene Chemicals Company. Noise sensitive site – indoor activities preferable as historical issue with waste management	Potentially suitable Would have to overcome flooding at application stage
PE2.25	Brynmau One, Two, and Three Estates and Glen Industrial Estate, Saltney	PE1.13	No	Brownfield existing industrial estate	PEA comprises terraced workshops along with various larger units and open storage sites, in a backland location between the railway line and the River Dee. Low grade employment area suited to waste uses	Yes
PE2.26	The Borders Industrial Park, Chesterbank Industrial Park and Brynmau Four Estate,	-	Western part in C1	Brownfield, existing industrial estate	PEA comprises some 70+ small workshop units and two larger depots in a backland location between the railway line and the River Dee. Would need to overcome flood issues at the application stage	Yes, existing waste uses operate from within this site. Low grade employment area suited to waste uses
PE2.27	Engineer Park St Ives Park, Sandycroft	-	C1	Brownfield, industrial estate	PEA comprises modern industrial and office park, includes a large factory for Promens and several logistics units. Would need to overcome flood issues at the application stage	Quality of PEA doesn't appear to lend itself to waste uses.
PE2.28	Glendale Business Park, Sandycroft	-	C1	Brownfield, existing industrial estate	Established industrial location, part of the wider industrial centre of Chester Road, and accommodating a number of large manufacturing and logistics occupiers with limited land and premises availability. Would need to overcome flood issues at the application stage.	Yes, potentially suitable, if land became available

Cynllun Datblygu Lleol Sir y Fflint i'w Archwilio gan y Cyhoedd 2015-2030
Papur Cefndir 5: Gwastraff – Medi 2019

PE2.29	Sandycroft Industrial Estate, Sandycroft	-	C1	Brownfield, existing industrial estate	Industrial estate, comprises a large vehicle storage compound and older workshops north of Prince William Avenue along with larger modern industrial and office units to the south. There is no land for future opportunities so will rely on land and buildings coming to the market. And would need to overcome flood issues	Yes, existing waste uses. Suitable for waste uses should land become available
PE2.30	Rowley's Drive, Shotton	PE1.14	C1	Greenfield but historically PDL	Small local industrial estate, providing a good mix of office and workshop premises, some in trade/motor trade use. Flood risk (FCA) has been a major obstruction to recent proposals within this PEA.	Not suitable: Nature and scale of this PEA doesn't lend itself to waste uses.

