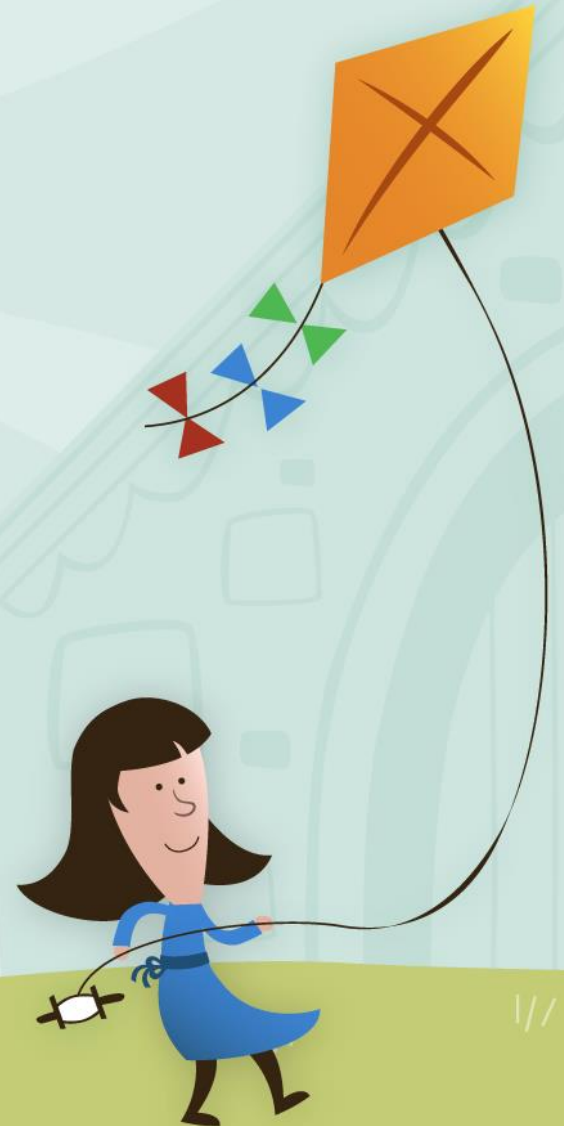


Informal Consultation Findings

Brynford, Lixwm & Rhosesmor Area School Review

Children and Young people's version

November 2016



Why did we want to speak with you?

We are part of a team that work for the Council to support schools.

We came to speak to your school about the plans for Brynford C.P. School, Lixwm C.P. School and Ysgol Rhos Helyg, Rhosesmor.



We wanted to know your thoughts about options for your school and other schools in your area.

Some of you from the School Council came along to a session to tell us your thoughts and those of your classmates.

Some of you also completed a survey.

We asked you to tell us if you liked, were not sure, or did not like each option.



Option 1

Stay the Same

Option 2




Joining all of our schools together

Option 3

Joining some of our schools together



Brynford C.P. School

	1 Stay the Same	2 Joining all of our schools together	3 Joining some of our schools together
	0	1	9
	9	7	0
	0	1	0



Brynford C.P. School

1

Stay the Same



- Small School,
- You can all join in competitions,
- Nobody would need to move,
- You know everyone

2
Joining all of
our schools
together

2



- More money
- Toilets
- Bigger playgrounds
- More places to explore
- Bigger sports day
- New clothes
- More friends
- New name

3
Joining some of
our schools
together

3



- More friends
- More room
- More teachers

- Money



- Busy roads
- Everything would change
- Might lose friends
- Uniform
- New logo and name
- 3 schools will be too big



- Busy roads
- Head teachers
- Change in Governors
- Different teachers



Lixwm C.P. School

	1 Stay the Same	2 Joining all of our schools together	3 Joining some of our schools together
👍	6	2	11
👉	3	1	0
👎	4	10	2



Lixwm C.P. School

1

Stay the Same



- More attention and time with the teachers which you can educationally benefit from
- It's small
- There won't be anybody having to get used to space
- Less arguing
- More people that you know



- A little bit bigger
- Need harder maths lessons

2

Joining all of our schools together



- People would want to come because it is new modern and big
- More friends
- Shorter journeys
- New teachers
- Win more tournaments
- More teachers
- Different uniform/school name/different badge
- You will get more play ground
- Get more play time equipment
- More people to play with
- Better sports team



- More food to make
- More arguing
- More falling out
- You might lose your friends
- People might be mean
- Less room to play
- More enemy's
- Longer journey
- There might be people that we don't know and they are mean
- Friends will leave

3

Joining some of our schools together



- More friends
- You will have a bigger play ground
- You will have better sports teams
- So other girls or boys aren't the only girls and boys in their year
- More teachers
- Shorter journeys
- Win more tournaments
- Get more equipment



- More enemy's
- Longer journey
- Transport (Bus)
- Losing your best friend

Ysgol Rhos Helyg, Rhosesmor

	1 Stay the Same	2 Joining all of our schools together	3 Joining some of our schools together
👍	8	0	7
👉	1	5	2
👎	0	4	0



Ysgol Rhos Helyg, Rhosesmor

1

Stay the Same

- Less population
- Less transport issues
- You don't have to make lots of school jumpers
- Big field
- Nothing would change



2

Joining all of our schools together

- New friends
- Save energy because we would be sharing the same kitchen
- Save energy from wind turbine if we all moved to Rhos Helyg site
- More playing things i.e. trim trail, slide, swing
- More toilets
- Water fountains
- More room to put things where the other school was
- Bus



3

Joining some of our schools together

- Less pollution
- Full class rooms
- More toilets
- New friends
- Save Energy
- Greenhouse
- One cook
- They are both small schools so they should join to make the bigger school



- Different money for each pupil
- No new friends
- No loos
- We don't want to leave






- more pollution because people are travelling further
- new school uniform
- new teachers
- might have to move
- school trip
- not enough space to play
- not enough room in classroom
- more work for school
- wouldn't have a choice of school



- School Uniforms
- Losing jobs
- Car rides longer for some family's
- More tables because there is no room
- More food for the cook to make



All School Results

	1 Stay the Same	2 Joining all of our schools together	3 Joining some of our schools together
	14	3	27
	13	13	2
	4	15	2



27 children and young people and 4 parents completed the survey.

5 from Brynford, 6 from Lixwm, 19 from Rhos Helyg and 2 from other schools.

Overall the most popular option was Option 3.

Brynford people preferred Option 1.

Lixwm people also preferred Option 1.

Rhos Helyg people preferred Option 3.

Of the 33 surveys received, 10 also made some comments.

Option 1

Stay the Same

Option 2

Joining all of our schools together

Option 3

Joining some of our schools together



Children & Young People's Comments

- “I'd favour option 3 because it could make our school better and make it more popular. We could have more opportunities in competitions, we may have better technology and our classrooms may be better and more up to date”.

- “There is already a document on the internet from FCC showing the Lixwm school site as a suitable site for development if the school should close. If this happened, none of the options already discussed would cover the large increase in children this could produce. In the absence of a 5 year (or longer term) housing availability plan, how can any decisions be taken on the number of school places and their location?”

- “I think that Rhos Helyg has made me feel very happy and let me achieve all my goals. Please don't change my school”.
- “I am in my last year at Rhos Helyg and it will be a shame for this school to close as I have had a great time here”.
- “I love my school. I love playing outside with my friends. I like seeing sheep. My teacher is friendly.”
- “I would prefer to stay at Rhos Helyg because its closer to home and I think my teacher is ace. I think I will get less attention and help if we have more children come to our school.”



Children & Young People's Comments

- “Don't prevent people getting education!”

- “I have recently moved to Brynford and my child is on the waiting list to enter Brynford CP School. I understand that the schools cannot remain in the current position but to upheave 3 schools would be too drastic depending on school numbers. Also it needs to be considered the impact on the children themselves and how they would get to their new school.” (Comment by Parent)

- “I love my school. Please don't take it away. I walk there sometimes across Halkyn Mountain from my Grans house. We all have the best time at Ysgol Rhos Helyg.”
- “I really want to stay at Rhos Helyg as I like all my teachers and like the way they teach me. I also enjoy going to after school club which I have to go to when my mum and dad are in work and can't collect me at 3.10 p.m., plus I also enjoy looking after the school chickens which is done on a rota system. I also want to stay at Rhos Helyg as I want to go onto Mold Alun School.”



What happens next?

Councillors and officers will now have a meeting to look at all the feedback from the Informal Consultation and decide which option they think is best.

We will let everyone know the outcome.



If you want to find out more information there are documents on the internet.

Log onto:

www.flintshire.gov.uk/schoolmodernisation

**Thank
you for
your help!**

