



# Transport Impact Assessment

Ysgol Gymraeg Mornant, Picton

Proposal to close Ysgol Gymraeg Mornant, Picton  
(Welsh Medium Community School) as of 31<sup>st</sup> August 2016

NOVEMBER 2015

## Index

Number	Section
1	Introduction
2	Background
3	Sources of Information
4	Ysgol Gymraeg Mornant, Picton <ul style="list-style-type: none"><li>• Local Map of school location</li><li>• Pupil Numbers</li><li>• Pupil Home Location</li><li>• Maps of pupils address location</li><li>• % of pupils not attending Ysgol Gymraeg Mornant, Picton</li></ul>
5	Transport Policy
6	Impact on Journey Times
7	Walking Routes, Safety Crossings and Transport Links
8	Impact on Transportation Costs
9	Conclusions

## **1. Introduction**

- 1.1 Flintshire County Council is carrying out a formal consultation on a proposal to close Ysgol Gymraeg Mornant, Picton as of 31<sup>st</sup> August 2016 with existing pupils transferring to other nearby Welsh medium schools subject to parental preference.
- 1.2 This document will:
- Summarise each of the issues in relation to the nature of the journeys to alternative provision the resulting journey times for pupils, including Special Educational Needs pupils; whether primary school pupils will have a one-way journey in excess of 45 minutes or secondary school pupils one way journeys of over an hour, and if applicable available walking routes to the alternative provision

## **2.0 Background**

- 2.1 Our aim is that children and young people in Flintshire will develop essential life skills, a strong desire for lifelong learning and be very well prepared for the world of work. All children and young people will be supported to progress through the different stages of their education. Every child and young person will be entitled to a learning programme that will be personalised to make the most of his or her abilities. Children and young people will learn in an exciting and innovative range of styles and settings. These will include vocational, enterprising, voluntary, spiritual, cultural and sporting learning experiences. School organisation objectives will provide opportunities for Welsh and English medium provision, and also faith provision.

Flintshire County Council is committed to continuing to raise standards, with key tasks to include securing:

- high expectations and a clear focus on improving teaching, learning and attainment in all school communities;
- all resources available to schools being focused on improving outcomes for children and young people in a context of annual budget pressures;
- a consistent approach to the collection, analysis and use of assessment information, including tracking systems, to target support and interventions;
- continued commitment to the development of school teaching and support staff, and
- supporting, expanding and promoting Welsh-medium education within the whole community, increasing the number and percentage of pupils receiving Welsh-medium education in compliance with the Welsh Government's Welsh-Medium Education Strategy of developing learners

who are fully bilingual (i.e. fluent in both English and Welsh) and where there is demand.

2.2 Flintshire County Council Cabinet approved the revised School Modernisation Strategy in January 2015, which was updated from the Council's previous strategy adopted by Cabinet in 2010. This document is available at the following link:

[www.flintshire.gov.uk/schoolmodernisation](http://www.flintshire.gov.uk/schoolmodernisation).

2.3 The School Modernisation Programme is required because we need to:

- Ensure education provision is both high quality and sustainable;
- Improve the quality of school buildings and facilities;
- Provide the right number of school places, of the right type, in the right locations;
- Address unsustainable school buildings and supporting infrastructure;
- Recognise that doing nothing means higher pupil teacher ratios as funding reduces; and
- Ensure that we maximise external funding through the Welsh Government's 21st Century Schools Programme.

2.4 The key 'drivers' or criteria for modernisation which underpin the above are:

- Educational improvement
- Resilient school leadership
- Suitable buildings
- Unfilled places
- Diminishing resources

2.5 The proposal is to close Ysgol Gymraeg Mornant, Picton (Welsh Medium, community school) as of 31<sup>st</sup> August 2016 with the pupils transferring to the local network of schools based on parental preference.

2.6 The proposal is put forward on the basis of criteria laid down in the Council's School Modernisation Strategy, namely:-

- Unfilled places across the primary school portfolio – Ysgol Gymraeg Mornant, Picton, as at January 2015 (PLASC<sup>1</sup>) had 48 full time pupils with unfilled places at 57%. As at September 2015 the school pupil full time pupil numbers is 44 full time pupils, with unfilled places at 60.36%; (based on the current school capacity assessment of 111 full time pupils);
- Diminishing resource criteria (i.e. schools supported by pupils not from their local community and/or small numbers within the community raise concern regarding sustainability within the school's portfolio);

---

<sup>1</sup> PLASC – Pupil Level Annual School Census

- Small School – The school population of Ysgol Gymraeg Mornant, Picton is lower than national designation of a small school, additionally school numbers do not meet the minimum requirements of primary school models as noted in the Council’s School Modernisation Strategy.
- Ysgol Gymraeg Mornant, Picton is also currently (as at July 2015) in Welsh Government categorisation 4 (out of 1-4 with 4 being the lowest) for standards.

### **3.0 Sources of Information**

3.1 The following sources of information have been used for the purposes of this document:

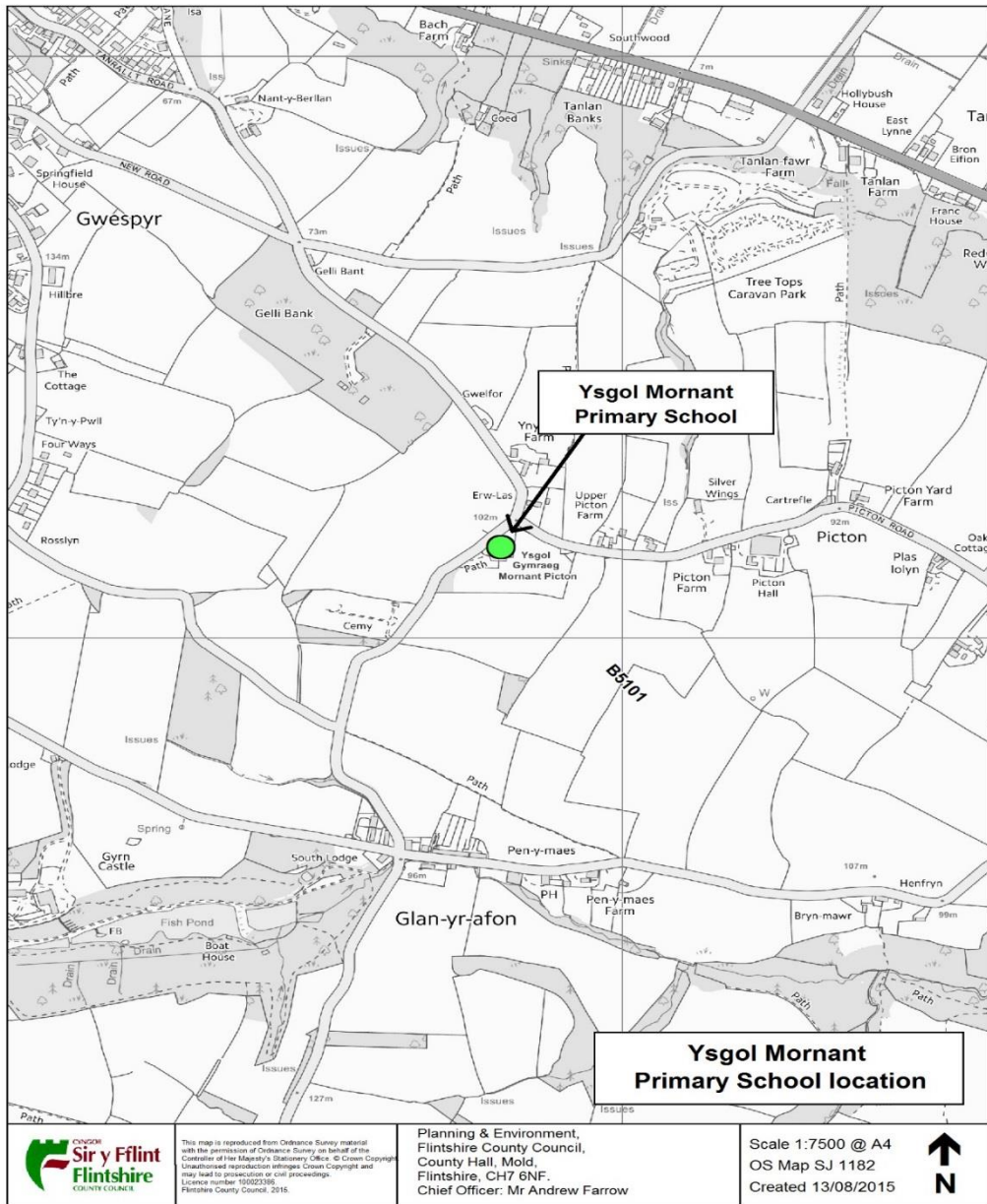
- PLASC January 2015 data
- Statistical information stored by the Council;
- Pre consultation responses
- Transport Policy
- School Transport Monitoring Team Information
- Road Safety Team Information

### **4.0 Ysgol Gymraeg Mornant, Picton**

4.1 Ysgol Gymraeg Mornant, Picton is located in the hamlet of Gwespyr Picton. Ysgol Gymraeg Mornant, Picton is a Welsh Medium primary school for pupils aged 3-11 years of age.



4.2 Location of Ysgol Gymraeg Mornant, Picton is shown below;



This map is reproduced from Ordnance Survey material with the permission of Ordnance Survey on behalf of the Controller of Her Majesty's Stationery Office. © Crown Copyright. Unauthorised reproduction infringes Crown Copyright and may lead to prosecution or civil proceedings. Licence number: 100023396. Flintshire County Council, 2015.

Planning & Environment,  
Flintshire County Council,  
County Hall, Mold,  
Flintshire, CH7 6NF.  
Chief Officer: Mr Andrew Farrow

## **Pupil Numbers**

- 4.3 Should the proposal progress and educational provision in Gwespyr Picton cease parents/carers would need to seek alternative provision. The alternative schools have been identified as able to deliver outcomes and offer provision at least equivalent to Ysgol Gymraeg Mornant, Picton are:-

Ysgol Gwenffrwd, Holywell

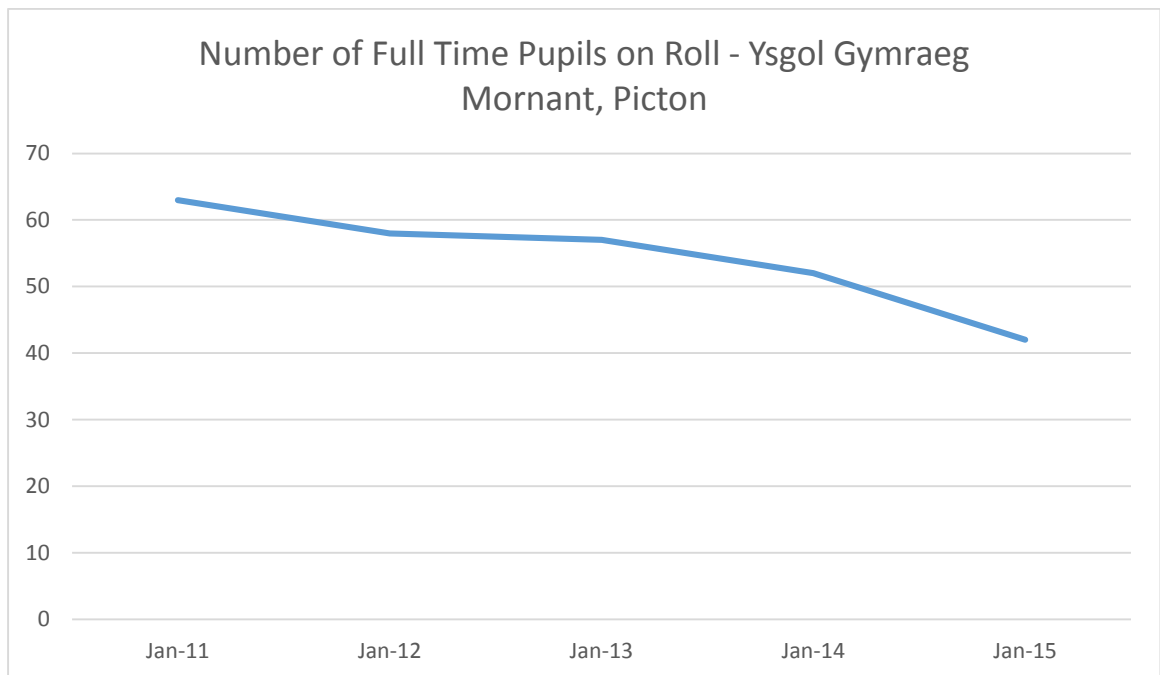
Ysgol Y Llys, Prestatyn

Ysgol Gwenffrwd, Holywell and Ysgol Y Llys, Prestatyn are also Welsh Medium community primary schools for pupils aged 3-11. The Council acknowledges that parents/carers may also wish to choose alternative provision in the area. The above schools above have been identified within the formal consultation document.

- 4.4 As at January 2015 Ysgol Mornant, Gwespyr Picton has 48 Full Time pupils on roll. Pupil numbers over a 5 year period are displayed below:

Numbers of **full time pupils** on Roll (*Source: Jan Annual PLASC Data*) Jan 2011-2015

<b>Jan 11</b>	<b>Jan 12</b>	<b>Jan 13</b>	<b>Jan 14</b>	<b>Jan 15</b>
63	58	57	52	48

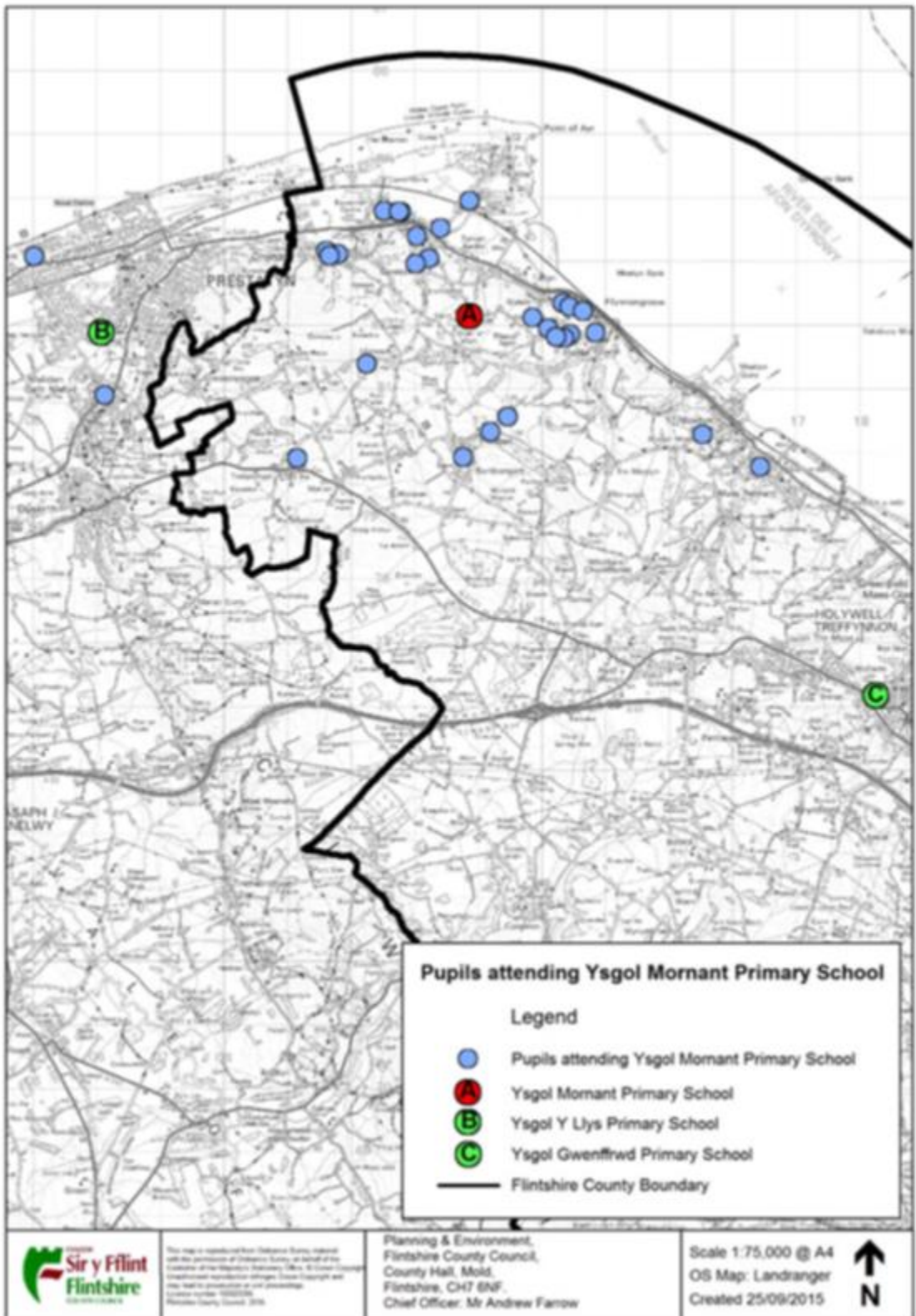


The actual number of full time pupils on roll as at September 2015 has been verified with Ysgol Gymraeg Mornant, Picton and Flintshire School Management Information Team, the school currently has 44 Full Time pupils on roll.

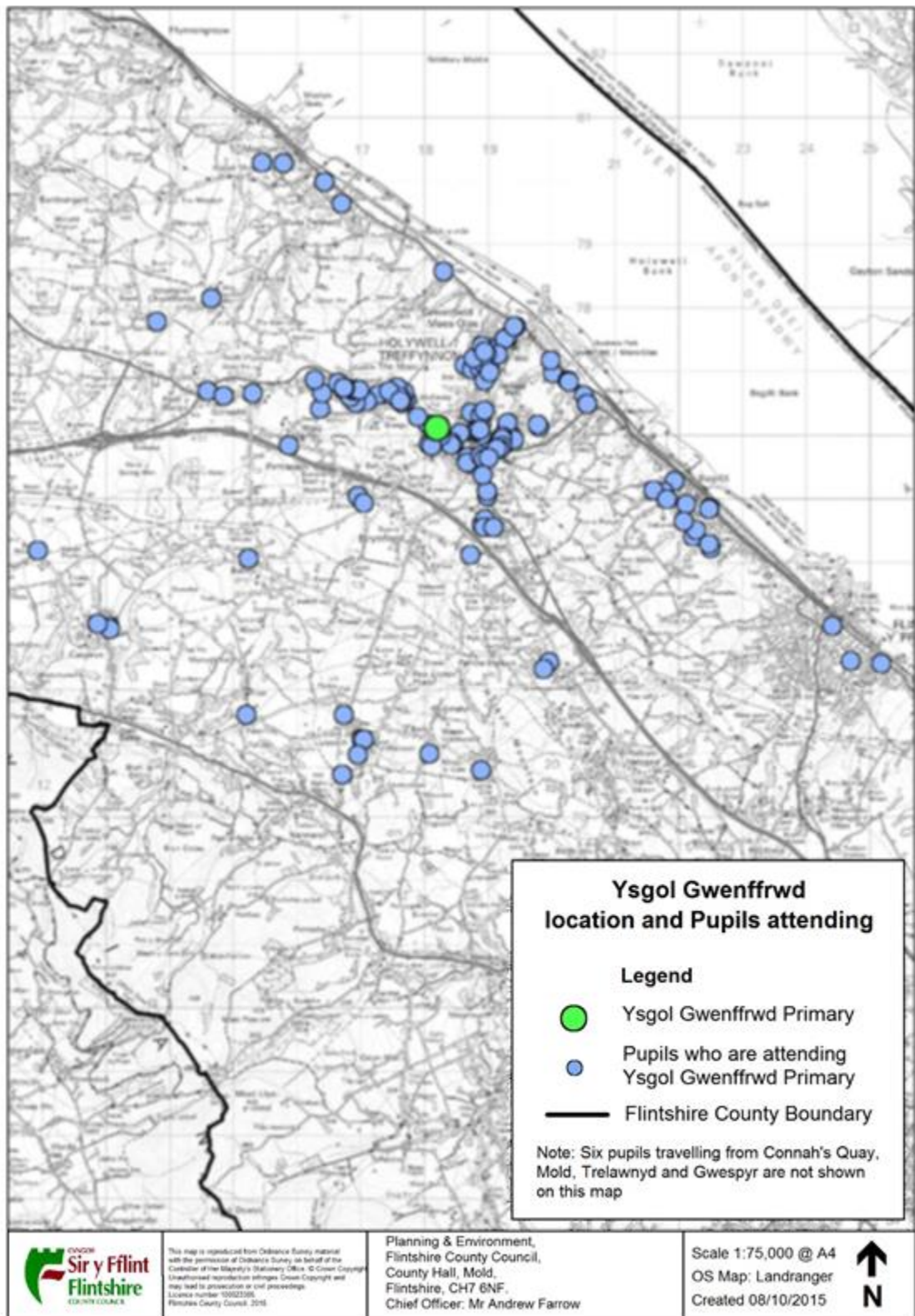


## **Pupil Home Location**

- 4.5 The Council's school admissions policy is based on the principle of attendance at the nearest suitable school, based on distance. The Council does not operate a system based on catchment areas. Schools are referred to as the 'nearest suitable school' which takes into account language and faith preference. Parents/carers may express a preference for any school for their child/children and as long as there are available spaces a place must be allocated.
- 4.6 The current home location (as at September 2015) of Ysgol Gymraeg Mornant, Picton pupils is displayed on the map on the next page;



4.7 The current home location (as at September 2015) of Ysgol Gwenffrwd, Holywell pupils is displayed in the map below;



4.8 The current home location of of Ysgol Y Llys pupils is displayed in the map below, provided by Denbighshire County Council;



4.9 Percentage of pupils attending Ysgol Gymraeg Mornant, Picton (Source: snapshot of pupils from the ONE system, September 2015)

School	% of pupils whose nearest Welsh Medium School is Ysgol Gymraeg Mornant, Picton	% of pupils where Ysgol Gymraeg is not their nearest Welsh medium school
Ysgol Gymraeg Mornant, Picton	90.9%	9.1%

**5.0 Transport Policy**

5.1 The current transport arrangements for Ysgol Gymraeg Mornant, Picton are as follows:

Contract 1 (Bus service) = £100 per day

Contract 2 = £35 per day

Contract 3 = £45 per day

Current transport costs = £180.00 per day

Total annual transport costs = £180.00 x 190 school days = £34,200.00

5.2 The Council will continue to provide transport in accordance with its Transport Policy.

<http://www.flintshire.gov.uk/en/PDFFiles/Lifelong-Learning/Schools/School-Transport/Transport-Eligibility-Criteria-.pdf>

A small number of pupils at Ysgol Gymraeg Mornant, Picton reside in the county of Denbighshire, transport eligibility assessment would be managed by Denbighshire County Council. A copy of the consultation document will be sent to them for information. Denbighshire's Home to transport policy can be found at the following link:

<https://www.denbighshire.gov.uk/en/resident/education/grants-and-funding/free-school-transport.aspx>

5.3 In summary the Council provides free transport for children residing in Flintshire of compulsory school age, where a child receiving primary education lives over two miles from the nearest appropriate school.

The Council also provides free transport for pupils residing in Flintshire of statutory school age:-

- where the route to school is considered to be hazardous by the Local Authority;
- where transport to a named school is identified in a pupil's Statement of Special Educational Needs. This would normally be on medical or educational grounds and would be deemed essential in the context of other criteria identified in this policy
- where a child requires transport on medical grounds and no suitable public transport exists;

Free transport is also provided for pupils residing in Flintshire of statutory school age:

- where a child whose parents/carers are in receipt of Income Support or Working Tax Credit resides more than 2.5 miles from the nearest appropriate school;
- to the nearest Welsh medium school under the criteria identified above;
- to the nearest voluntary aided school where the admission to the school is on denominational grounds, subject to the distance criteria. Consultation with individual schools will take place to confirm the admission criteria under which pupils are admitted. Suitable evidence of adherence to the faith of the school such as a baptismal certificate or a letter from a priest may be requested.

5.4 Most pupils at Ysgol Gymraeg Mornant, Picton would see an increased distance from their home address to the alternative schools.

5.5 A small number of pupils at Ysgol Gymraeg Mornant, Picton reside in the county of Denbighshire, transport eligibility assessment would be managed by Denbighshire County Council. A copy of the consultation document will be forwarded to them for information.

## 6.0 Impact on Journey Times

6.1 Sections 3 and 4 of the Learner Travel (Wales) Measure 2008 states that transport arrangements are not suitable if 'they take an unreasonable amount of time'.

6.2 Although the measure does not specify a time limit for all journeys. Welsh Ministers consider that normally journey times should be no more than 45 minutes for primary school travel and 60 minutes for secondary travel.

6.3 The approximate journey times for pupils from Ysgol Gymraeg Mornant, Picton to the alternative schools is as follows,

Schools	Location	Distance from Ysgol Gymraeg Mornant (approx.)	Approximate Car Journey Time (minutes) – assessed	Type	Language Category

			using google maps		
Ysgol Gymraeg Mornant, Gwespyr Picton, Picton Road, Penyffordd, Holywell, CH8 9JQ	Gwespyr Picton	N/A	N/A	Community	Welsh Medium
Ysgol Gwenffrwd, Whitford Street, Holywell, Flintshire, CH8 7NJ	Holywell	6.69 Miles	14 minutes	Community	Welsh Medium
Ysgol Y Llys, Princes Avenue, Prestatyn, Denbshire, LL19 8RP	Prestatyn	4.37 miles	15 minutes	Community	Welsh Medium

*Distance Source: Route Finder 3.41 Flintshire County Council Mapping System*

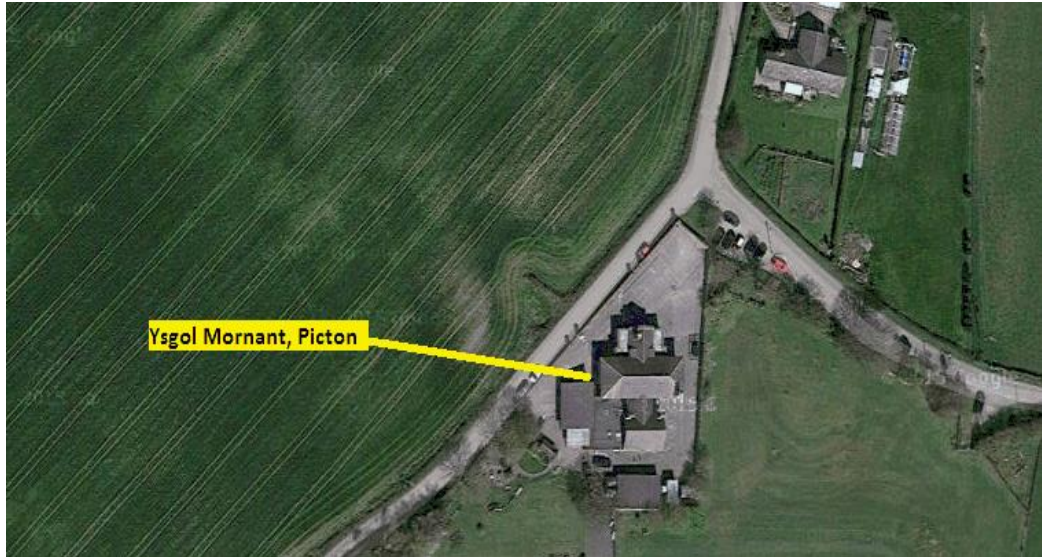
- 6.4 100% of the current school cohort, whom reside in Flintshire, would be eligible for transport to the nearest Welsh Medium school. Pupils in Denbighshire may be eligible if they meet Denbighshire County Council home to school transport criteria.
- 6.5 For most pupils currently at Ysgol Gymraeg Mornant, Picton the distance travelled to alternative Welsh medium schools would increase, however this would not be in excess of the learner travel guidelines.

## **7.0 Walking Routes, Safety Crossing Facilities and Transport Links**

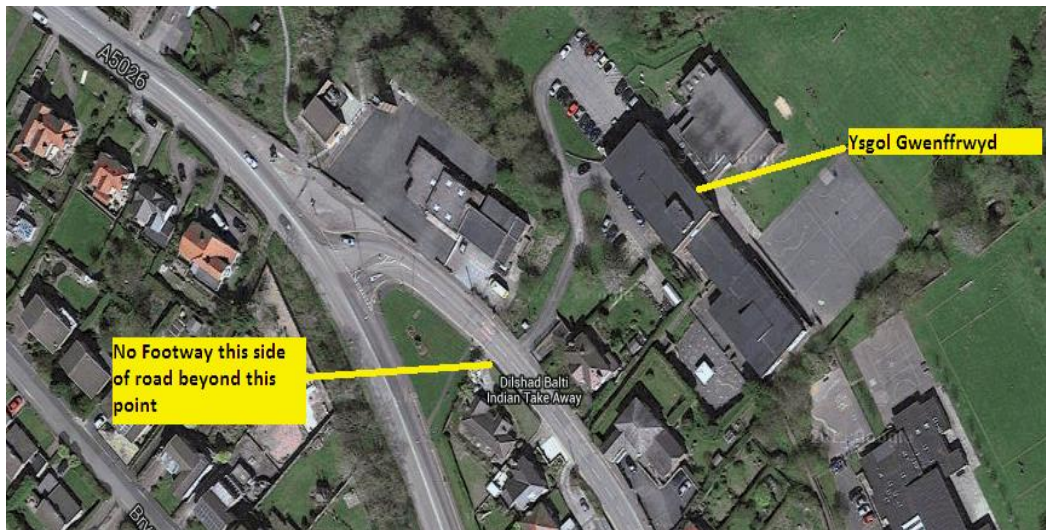
- 7.1 Due to the location of Ysgol Gymraeg Mornant, Picton, there are limited routes in the area, which enable pupils to walk or cycle to school, therefore the majority of pupils of statutory school age are provided with free home to school transport as per Council policy.

Additionally there has been no projects submitted to Welsh Government under the safer routes in the community scheme, again due to the nature of the area and the local road infrastructure.

- 7.2 The map below shows Ysgol Gymraeg Mornant, Picton, this school is in a rural area, and has no crossing facilities or footpaths in the vicinity.



7.3 The map below shows that Ysgol Gwenffrwd, Holywell, the school footpaths to the school, the school has no crossing facilities.



7.4 The map below shows the location and available footpath and drop off zone at Ysgol Y Llys, Prestatyn.





7.5 There are a small number of bus routes which run in and out of the village Gwespyr, as listed below

Bus route service 18 which serves Rhyl - Prestatyn - Gronant - Talacre - Gwespyr - Penyffordd - Rhewl - Maes Pennant - Mostyn - Greenfield - Holywell - Bagillt - Flint

7.6 There are no railway links to the village of Gwespyr Picton. The nearest railway stations are located in Prestatyn and Rhyl.

## **8.0 Impact on Transportation Costs**

8.1 The current annual transport costs to Ysgol Gymraeg Mornant, Picton are approximately £34,200.00.

8.2 Should the proposal be implemented pupils residing in Flintshire would be entitled to free home to school transport to their nearest Welsh medium school on the basis of the following grounds:-

- That the nearest appropriate Welsh medium school is more than 2 miles;
- That the route to the alternative schools would considered to be hazardous by the Council due to its rural location which has limited walking pathways in and out of the village.

8.3 This proposal has been developed in line with the Learner Travel (Wales) Measure 2008. The Council supports learners with free home to school transport if they meet criteria contained within its Home to School Transport Policy. For the modelling of the estimating transport costs as a result of the

proposal the Council have assumed the full and projected pupils for the Ysgol Gymraeg Mornant, Picton cohort (statutory school age only) will be provided with free transport to Ysgol Gwenffrwd, Holywell. The estimated annual cost of this provision would be £26,600.

## **9.0 Conclusions**

- 9.1 On the basis of the overall transportation impact assessment, the findings are that the proposal to close Ysgol Gymraeg Mornant, Picton would change current transport arrangements and increase journey times to school for the majority of pupils, however, travel times would be well within the Learner Travel (Wales) Measure 2008.
- 9.2 The majority of pupils of statutory school age are eligible for free transport to Ysgol Gymraeg Mornant, Picton. Should the proposal be implemented the majority of pupils of statutory school age would be entitled to home to school free transport to the nearest appropriate Welsh Medium school.
- 9.3 The Transport costs would reduce from £34,200 to an estimated £26,600 per annum.
- 9.4 The proposal does not negatively influence the current cohorts ability to walk to cycle to school.