



Transport Impact Assessment

Ysgol Llanfynydd

Proposal to close Ysgol Llanfynydd
(English Medium Community) as of 31st August 2016

OCTOBER 2015

Index

Number	Section
1	Introduction
2	Background
3	Sources of Information
4	Ysgol Llanfynydd <ul style="list-style-type: none">• Local Map of school location• Pupil Numbers• Pupil Home Location• Maps of pupils address location• % of pupils not attending Ysgol Llanfynydd
5	Transport Policy
6	Impact on Journey Times
7	Walking Routes, Safety Crossings and Transport Links
8	Impact on Transportation Costs
9	Conclusions

1. Introduction

1.1 Flintshire County Council is carrying out a formal consultation on a proposal to close Ysgol Llanfynydd as of 31st August 2016 with existing pupils transferring to other nearby schools subject to parental preference.

1.2 In this document the Council will:

- Summarise each of the issues in relation to the nature of the journeys to alternative provision and resulting journey times for pupils, including Special Educational Needs pupils; in particular whether primary school pupils will have a one-way journey in excess of 45 minutes or secondary school pupils one way journeys of over an hour;
- Arrangements for accessing alternative provision should encourage sustainable transport; and they should address the possible effect of any transport difficulties on pupils' engagement with attendance at school.
- Likely walking or cycling routes will be assessed for safety and accessibility should be assessed prior to bringing forward proposals'.

2.0 Background

2.1 Our aim is that children and young people in Flintshire will develop essential life skills, a strong desire for lifelong learning and be very well prepared for the world of work. All children and young people will be supported to progress through the different stages of their education. Every child and young person will be entitled to a learning programme that will be personalised to make the most of his or her abilities. Children and young people will learn in an exciting and innovative range of styles and settings. These will include vocational, enterprising, voluntary, spiritual, cultural and sporting learning experiences. School organisation objectives will provide opportunities for Welsh and English medium provision, and also faith provision.

Flintshire County Council is committed to continuing to raise standards, with key tasks to include securing:

- high expectations and a clear focus on improving teaching, learning and attainment in all school communities;
- all resources available to schools focussing on improving outcomes for children and young people in a context of annual budget pressures;
- a consistent approach to the collection, analysis and use of assessment information, including tracking systems, to target support and interventions; and
- continued commitment to the development of school teaching and support staff.

2.2 Flintshire County Council Cabinet approved the revised School Modernisation Strategy in January 2015, which was updated from the Council's previous

strategy adopted by Cabinet in 2010. This document is available at the following link:

www.flintshire.gov.uk/schoolmodernisation.

- 2.3 The School Modernisation Programme is required because we need to:
- Ensure education provision is both high quality and sustainable;
 - Improve the quality of school buildings and facilities;
 - Provide the right number of school places, of the right type, in the right locations;
 - Address unsustainable school buildings and supporting infrastructure;
 - Recognise that doing nothing means higher pupil teacher ratios as funding reduces; and
 - Ensure that we maximise external funding through the Welsh Government's 21st Century Schools Programme.
- 2.4 The key 'drivers' or criteria for modernisation which underpin the above are:
- Educational improvement
 - Resilient school leadership
 - Suitable buildings
 - Unfilled places
 - Diminishing resources
- 2.5 The proposal is to close Ysgol Llanfynydd, Llanfynydd, Near Wrexham, LL11 5HG (English Medium, community school) as of 31st August 2016 with the pupils transferring to the local network of schools based on parental preference.
- 2.6 The proposal is put forward on the basis of criteria laid down in the Council's School Modernisation Strategy, namely:-
- Unfilled places across the primary school portfolio – Ysgol Llanfynydd as at January 2015 (PLASC¹) had 42 full time pupils with unfilled places at 47.5%. As of September 2015 the school population is 34 full time pupils with unfilled places at 57.5%.
 - Diminishing resource criteria (i.e. schools supported by pupils not from their local community and/or small numbers within the community raise concern regarding sustainability within the school's portfolio); 44% of pupils attending Ysgol Llanfynydd are not their nearest school, and
 - Small School Criteria – The School population and capacity of Ysgol Llanfynydd is lower than national designation of a small school, additionally school numbers do not meet the minimum requirements of primary school models as noted in the Council's School Modernisation Strategy.

¹ PLASC – Pupil Level Annual School Census

3.0 Sources of Information

3.1 The following sources of information have been used for the purposes of this document:

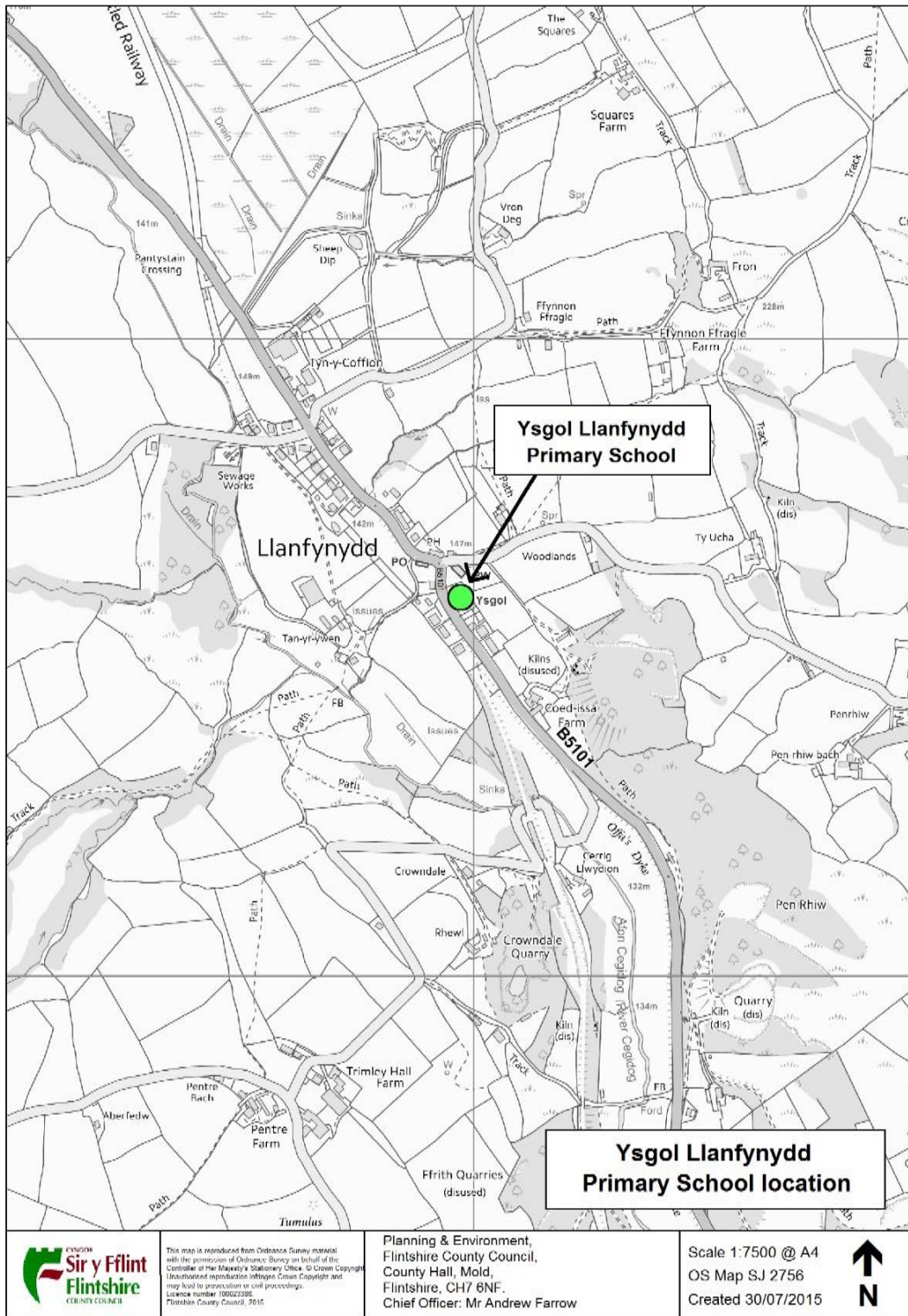
- PLASC January 2015 data;
- Statistical information stored by the Council;
- Informal consultation responses;
- Transport Policy;
- School Transport Monitoring Team Information; and
- Road Safety Team Information.

4.0 Ysgol Llanfynydd

4.1 Ysgol Llanfynydd is located in the village of Llanfynydd. Ysgol Llanfynydd is an English Medium primary school for pupils aged 3-11 years of age. It is currently Category 2 for standards in relation to the Welsh Government categorisation model.



4.2 Location of Ysgol Llanfynydd is shown below;



Pupil Numbers

- 4.3 As the current proposal relates to primary provision, should the proposal progress and educational provision in Llanfynydd ceases parents would seek alternative provision. The alternative schools have been identified as able to deliver outcomes and offer provision at least equivalent to Ysgol Llanfynydd are:-

Ysgol Parc Y Llan in Treuddyn,

Abermorddu C.P School,

Ysgol Estyn, Hope, and

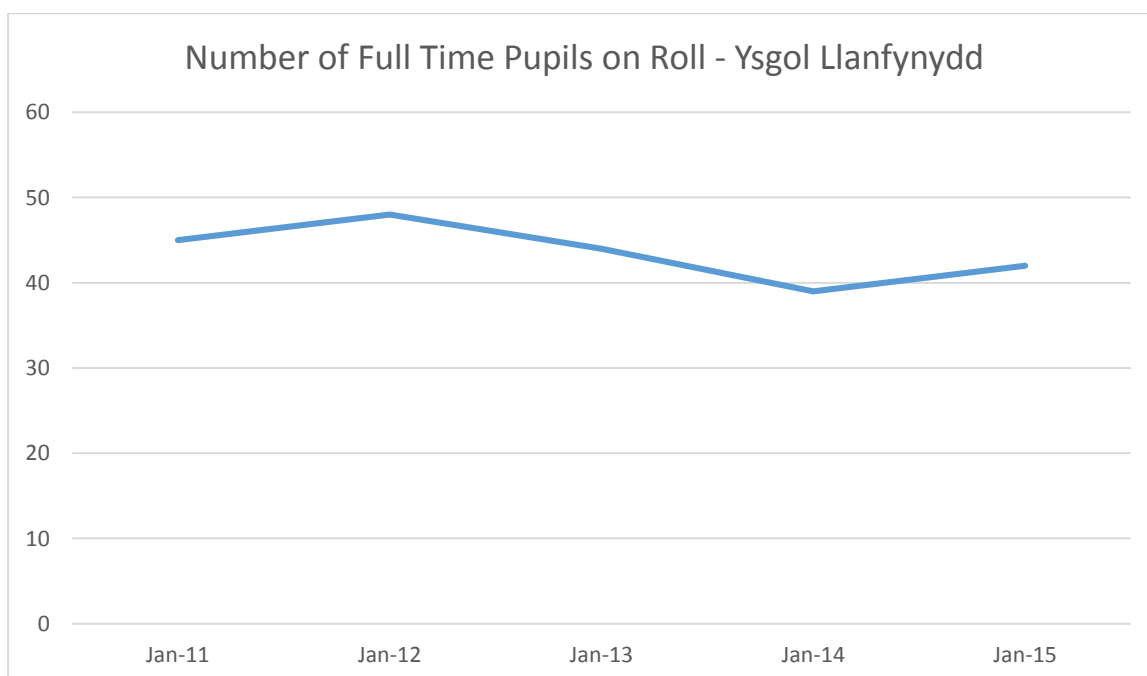
Bwlchgwyn C.P School, Wrexham

Ysgol Parc Y Llan in Treuddyn, Abermorddu C.P School, Ysgol Estyn, Hope, Bwlchgwyn C.P School, Wrexham are also English Medium community primary schools for pupils aged 3-11,. The Council acknowledges that parents may wish to choose alternative provision in the area. The schools above have been identified within the formal consultation document.

- 4.4 As of January 2015 PLASC Ysgol Llanfynydd has 42 Full Time pupils on roll. Pupil numbers over a 5 year period are displayed below:

Numbers of **full time pupils** on Roll (*Source: January Annual PLASC Data*) Jan 2011-2015

Jan 11	Jan 12	Jan 13	Jan 14	Jan 15
45	48	44	39	42



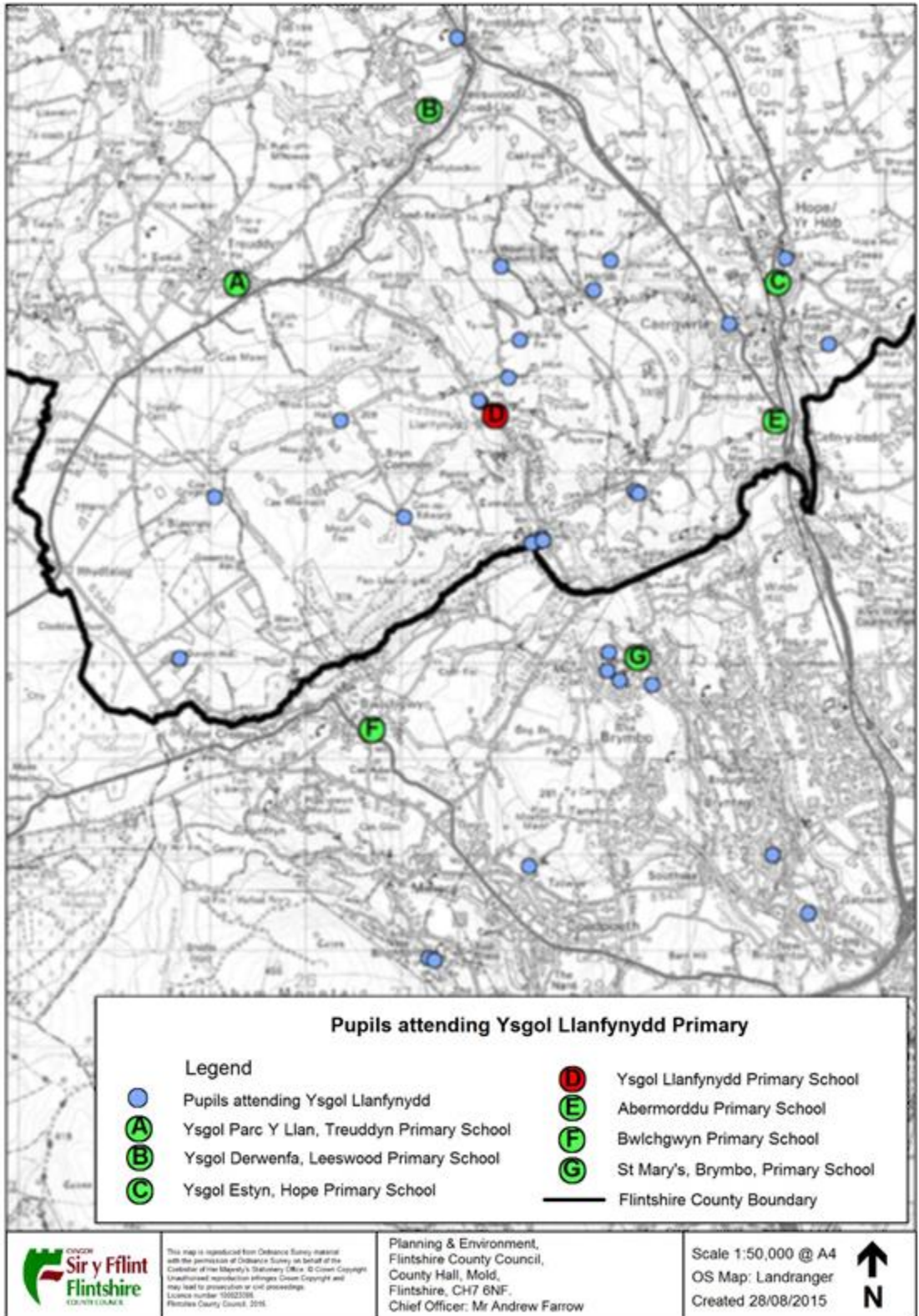
The actual number of full time pupils on roll as at September 2015 has been verified with Ysgol Llanfynydd and Flintshire's School Management Information Team, the school has 34 Full Time pupils on roll.

The Council acknowledges that statutory consultation around school organisation change will cause a level of uncertainty within the local school community, which can be a contributory factor in pupil number reduction.

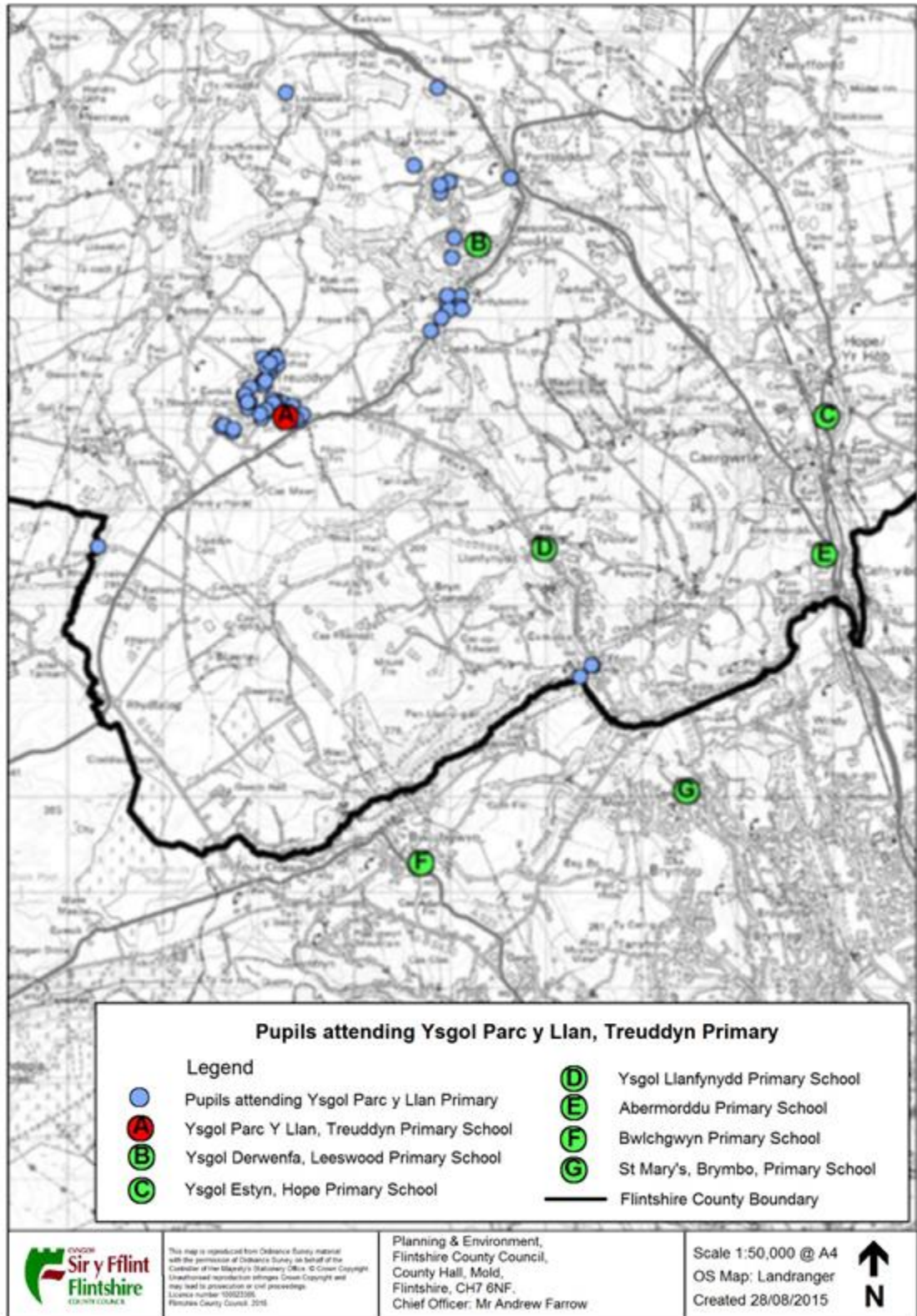
Pupil Home Location

- 4.5 The Council operates school admissions on a parental preference basis not a catchment area basis. Schools are referred to as the 'nearest suitable school' which takes into account language and faith preference. Parental preference means parents may choose any school for their child/children as long as there are available spaces.

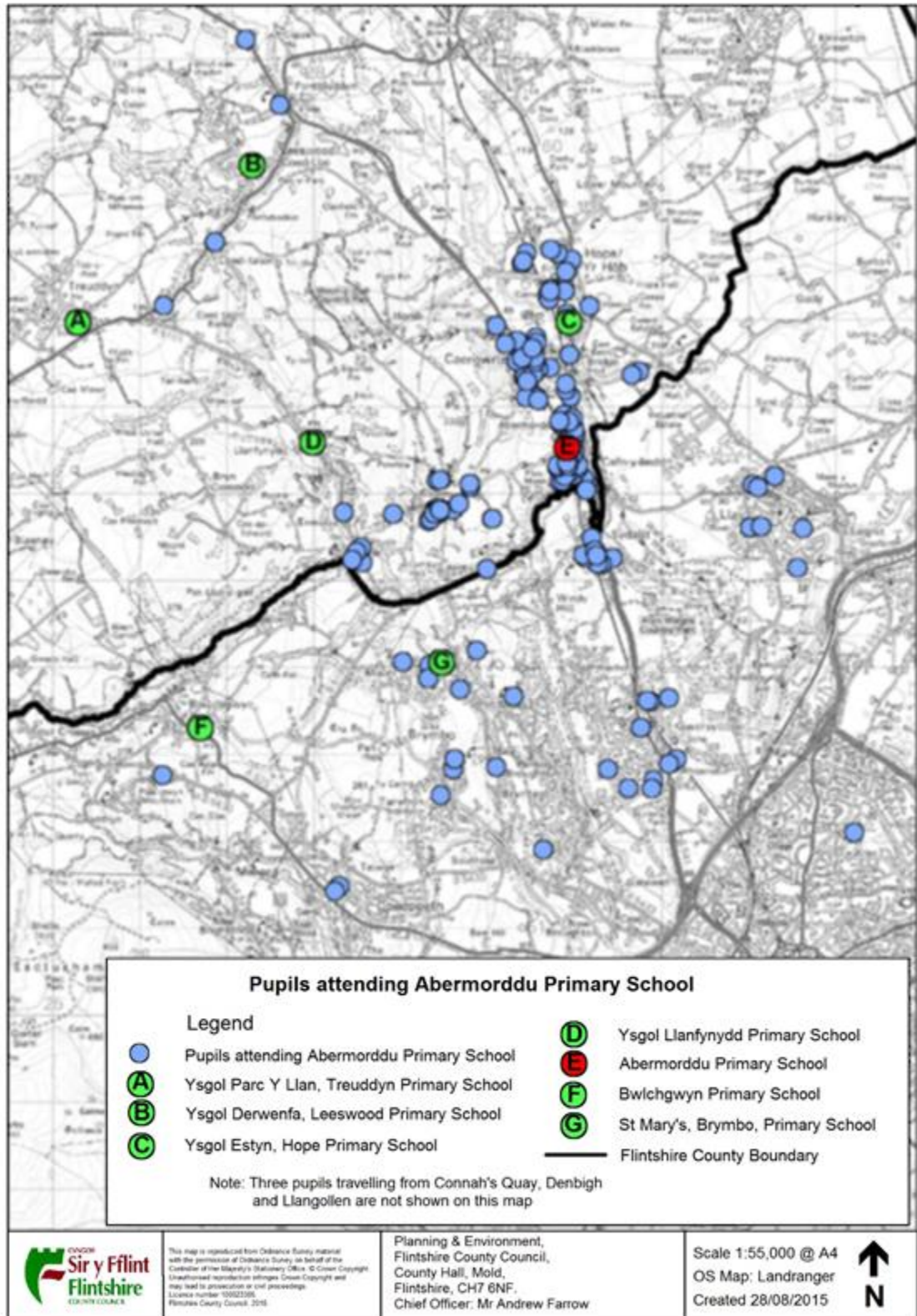
- 4.6 The current home location (as at September 2015) of Ysgol Llanfynydd pupils is displayed in the map on the next page.



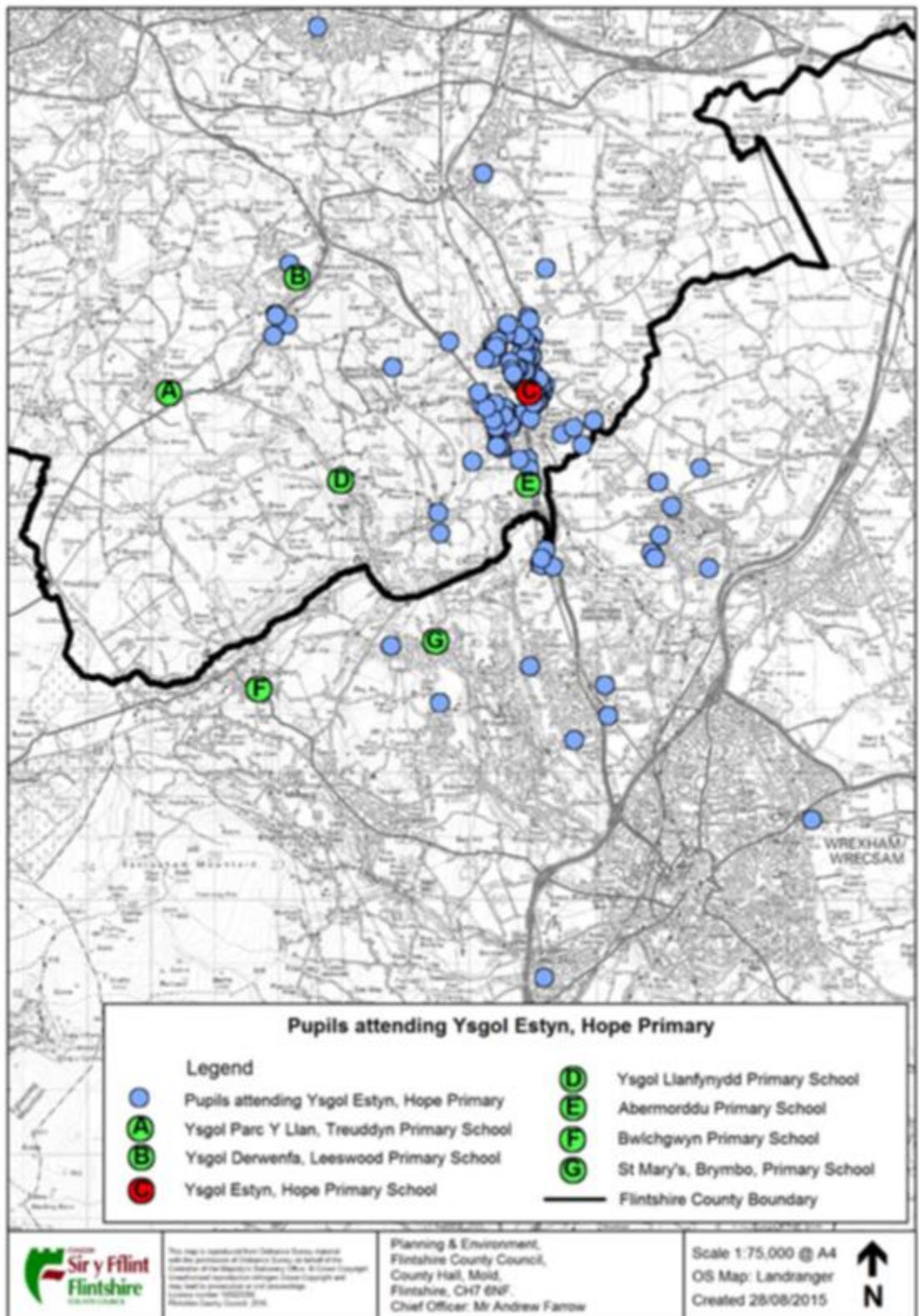
4.7 The current home location (as at July 2015) of of Ysgol Parc Y Llan, Treuddyn pupils is displayed in the map below;



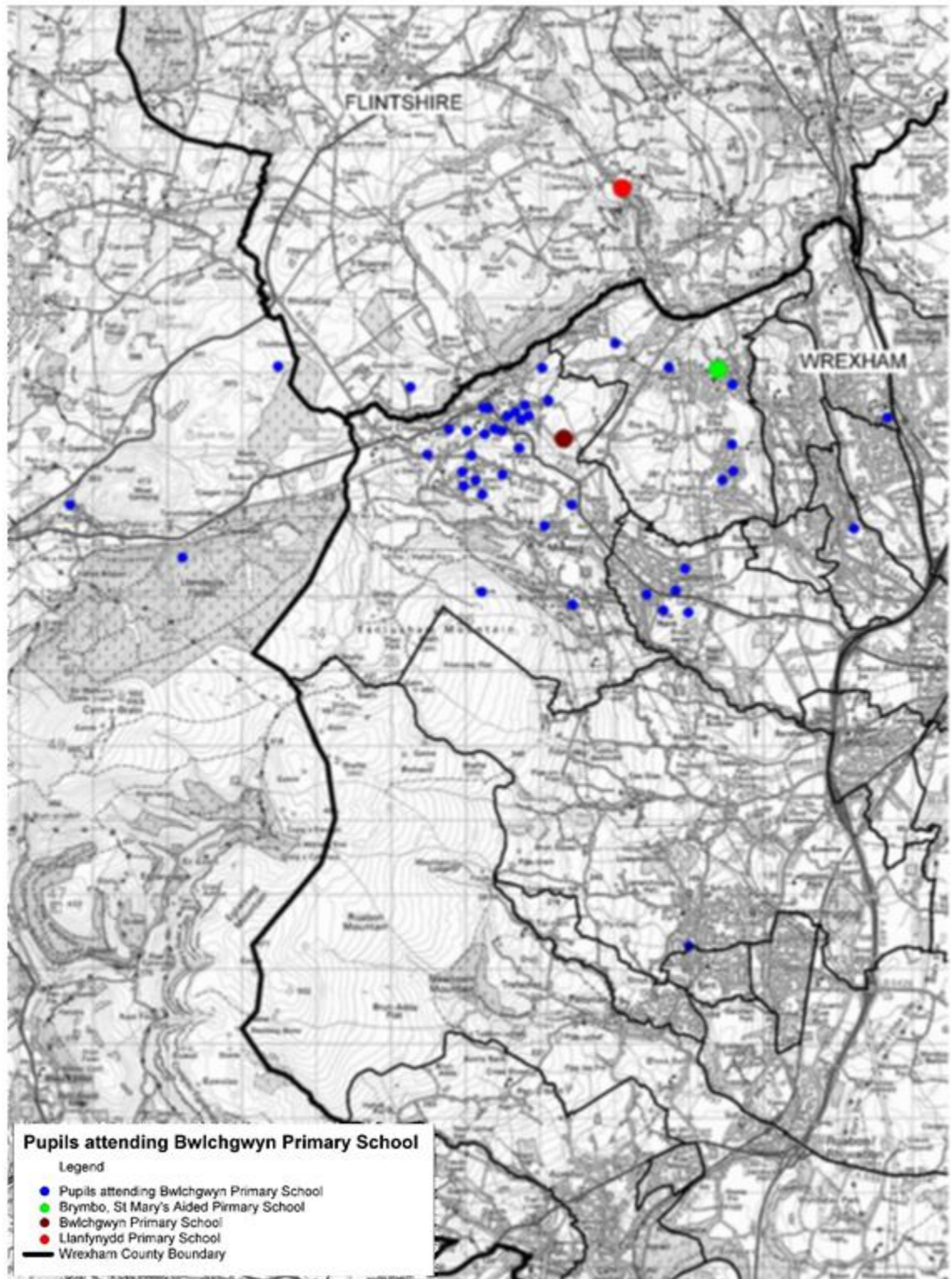
4.8 The current home location (as at July 2015) of of Abermorddu CP School pupils is displayed in the map below;



4.9 The current home location (as at July 2015) of Ysgol Estyn, Hope pupils is displayed in the map below:

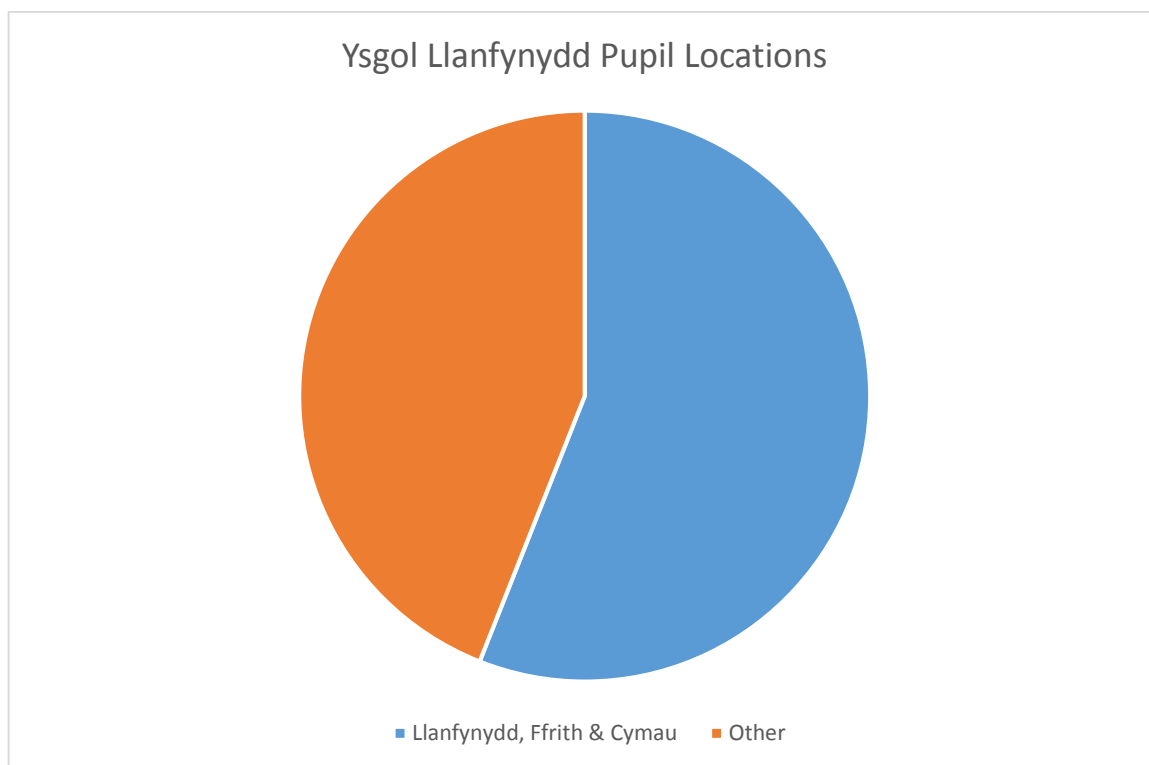


4.10 The current home location of Bwlchgwyn CP School, Wrexham pupils is displayed in the map below:



Reproduced from the Ordnance Survey mapping with the permission of the Controller of Her Majesty's Stationery Office Crown copyright. Unauthorised reproduction infringes Crown copyright and may lead to prosecution or civil proceedings. Wrexham County Borough Council Licence No100023429

4.12 The chart below displays the current (September 2015) home location for Ysgol Llanfynydd pupils. This shows that over half of the schools pupils live inside of the village of Llanfynydd and nearby villages of Ffrith and Cymau.



4.13 Percentage of pupils not attending Ysgol Llanfynydd as their nearest school (Source: snap shot of pupils from the ONE system, as at September 2015)

School	% of pupils who reside in Llanfynydd village	% of pupils who reside in Llanfynydd/Ffrith/Cymau	% of pupils who reside in other areas
Ysgol Llanfynydd	17.6%	55.8%	44%

5.0 **Transport Policy**

5.1 There are no current transport arrangements in place for pupils at Ysgol Llanfynydd.

5.2 The Council will provide transport in accordance with it's Transport Policy.

<http://www.flintshire.gov.uk/en/PDFFiles/Lifelong-Learning/Schools/School-Transport/Transport-Eligibility-Criteria-.pdf>

- 5.3 In summary the Council provides free transport for children of compulsory school age, where a child receiving primary education lives over two miles from the nearest appropriate school.

The Council also provides free transport for pupils of statutory school age:-

- where the route to school is considered to be hazardous by the Local Authority;
- where transport to a named school is identified in a pupil's Statement of Special Educational Needs. This would normally be on medical or educational grounds and would be deemed essential in the context of other criteria identified in this policy
- where a child requires transport on medical grounds and no suitable public transport exists;

Free transport is also provided for pupils of statutory school age:

- where a child whose parents are in receipt of Income Support or Working Tax Credit resides more than 2.5 miles from the nearest appropriate school;
- to the nearest Welsh medium school under the criteria identified above;
- to the nearest voluntary aided school where the admission to the school is on denominational grounds, subject to the distance criteria. Consultation with individual schools will take place to confirm the admission criteria under which pupils are admitted. Suitable evidence of adherence to the faith of the school such as a baptismal certificate or a letter from a priest may be requested.

- 5.4 A number of pupils at Ysgol Llanfynydd reside in the county of Wrexham, transport eligibility assessment would be managed by Wrexham County Borough Council. A copy of the consultation document will be forwarded to them for information. Wrexham County Borough Council's home to transport policy can be found at the following link:-

http://www.wrexham.gov.uk/english/education/transport_policy.htm

6.0 Impact on Journey Times

- 6.1 Sections 3 and 4 of the Learner Travel (Wales) Measure 2008 states that transport arrangements are not suitable if 'they take an unreasonable amount of time'.
- 6.2 Although the measure does not specify a time limit for all journeys. Welsh Ministers consider that normally journey times should be no more than 45 minutes for primary school travel and 60 minutes for secondary travel.

6.3 To assess any impacts of the options on the journey times for pupils, the Council has undertaken an exercise with to ascertain the approximate difference in the journey time.

- The distance from Ysgol Llanfynydd to the alternative school Ysgol Parc Y Llan, Treuddyn
- The distance from Ysgol Llanfynydd to the alternative school Abermorddu C.P School
- The distance from Ysgol Llanfynydd to the alternative school Ysgol Estyn, Hope
- The distance from Ysgol Llanfynydd to the alternative school Bwlchgwyn C.P School, Wrexham

Schools	Location	Distance from Ysgol Llanfynydd (approx.)	Approximate Car Journey Time (minutes) – assessed using google maps	Type	Language Category
Ysgol Llanfynydd, Llanfynydd, Near Wrexham, LL11 5HG	Llanfynydd	N/A	N/A	Community	English Medium
Ysgol Parc Y Llan, Ffordd y Llan, Treuddyn, Mold, CH7 4LN	Treuddyn	2.11 Miles	6 Minutes	Community	English Medium
Ysgol Abermorddu Community Primary School, Cymau Lane, Abermorddu, LL12 9DH	Abermorddu	2.12 Miles	7 minutes	Community	English Medium
Ysgol Estyn, Hawarden Road, Hope, LL12 9NL	Hope	3.05 Miles	10 minutes	Community	English Medium
Bwlchgwyn C.P School, Brymbo Road, Bwlchgwyn, Wrexham, LL11 5UD	Bwlchgwyn	4.11 Miles	9 minutes	Community	English Medium

Distance Source: Route Finder 3.41 Flintshire County Council Mapping System

6.4 17 of the current pupils at Ysgol Llanfynydd residing in Flintshire are eligible for transportation.

6.5 Most pupils at Ysgol Llanfynydd would see an increase distance from their home address to the alternative school, and would not be able to utilise walking routes within the village, due to its rural location. However the increase in travel time would not be in excess of the learner travel guidance.

7.0 **Walking Routes, Safety Crossing Facilities & Transport Links**

7.1 The safer route in the communities programme aims to improve accessibility and safety, and encourage walking and cycling within communities. The aim of programme is to change how people travel, resulting in greater social inclusion and improved community safety.

Safe Routes in Communities funds capital works such as:

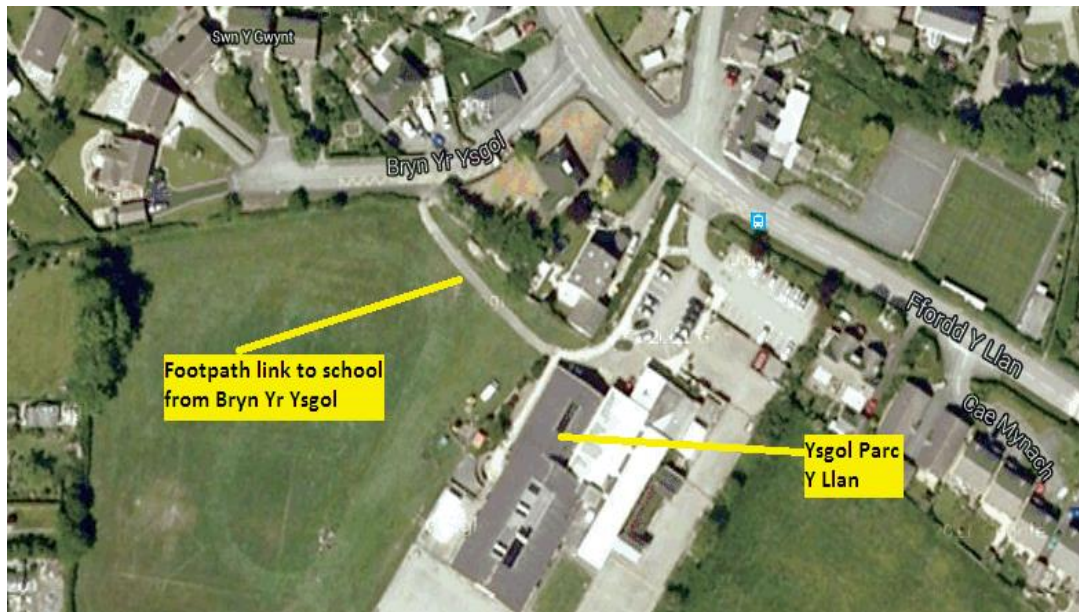
- crossings,
- traffic calming measures,
- cyclepaths,
- footpaths,
- secure cycle facilities (including stands and CCTV), lockers and changing facilities.

A successful scheme should demonstrate co-operation between local authorities and the wider community, including schools.

7.2 The site map below shows there is a zebra crossing facility at Ysgol Llanfynydd.



- 7.3 The site map below shows that Ysgol Parc Y Llan has a footpath link to the school from Bryn Yr Ysgol.



- 7.4 The site map below shows that Abermorddu CP School has a pedestrian phase on the traffic lights nearby the school, and there are footpaths in the vicinity of the school.



- 7.5 The site map below shows that Ysgol Estyn, Hope has puffin crossing facility outside of the school.



- 7.6 There is no available site map to share in relation to Bwlchwyn C.P School, Wrexham.

- 7.7 There are a small number of bus routes which run in and out of the village Llanfynydd, as listed below

Bus route 40 which serves Mold - Nercwys - Treuddyn - Llanfynydd - Cymau - Abermorddu - Cefn-y-Bedd - Gwersyllt - Wrexham

Bus route DB1 which serves Chester - Handbridge - Westminster Park - Dodleston - Kinnerton - Hope - Caergwrle - Abermorddu - Cymau - Llanfynydd - Treuddyn - Nercwys - Mold

Bus route DB3 which serves Chester - Saltney - Bretton - Higher Kinnerton - Hope - Caergwrle - Abermorddu - Cymau - Llanfynydd - Treuddyn

Bus route D42 which serves Flint - Northop - Mold - Leeswood - Treuddyn - Llanfynydd - Cymau - Caergwrle - Gwersyllt – Wrexham

- 7.8 There are no railway links to the village of Llanfynydd. The nearest railway stations are located in Cefn-y-bedd, Caergwrle and Hope.

8.0 Impact on Transportation Costs

- 8.1 There are no transport costs associated with transportation to Ysgol Llanfynydd.
- 8.2 Should the proposal be implemented 17 pupils would be entitled to free home to school transport based on the assumption they transfer to their nearest school Ysgol Parc Y Llan, Treuddyn on the basis of the following grounds:-
- That the nearest appropriate available school is more than 2 miles;
 - That the route to the alternative schools would be considered to be hazardous by the Council due to its rural location which has limited walking pathways in and out of the village.
- 8.3 The estimated annual cost of home to transport provision would be £16,150.
- 8.4 A number of pupils at Ysgol Llanfynydd reside in the county of Wrexham, transport eligibility assessment would be managed by Wrexham County Borough Council. A copy of the consultation document will be forwarded to them for information.

9.0 Conclusions

- 9.1 On the basis of the overall transportation impact assessment, the findings are that the proposal to close Ysgol Llanfynydd would provide some change to the current transport arrangements and journey times for pupils.
- 9.2 The number of eligible pupils residing in Flintshire for free Home to School transport is 17 based on the assumption that the nearest available school is Ysgol Parc Y Llan, Treuddyn, and would also be eligible for transport on the basis that the nearest appropriate school is more than 2 miles and the route would be considered to be hazardous by the Council due to its rural location which has limited walking pathways in and out of the village.
- 9.5 A number of pupils at Ysgol Llanfynydd reside in the Wrexham county, any transport eligibility assessment would be managed by the Wrexham County Borough Council. A copy of the consultation document will be forwarded to them for information.
- 9.6 Taking this into account, it is anticipated that there may be additional costs in transporting pupils should the proposal be progressed.
- 9.7 The estimated annual costs of transporting pupils will be £16,150.
- 9.8 It is important to note that transport costs are not straightforward and are subject to change. The size of the vehicle required, and how many pupils travelling will impact on how much certain contracts cost. Also it is difficult to estimate as each contract goes out for tender and depending on where the operator is located prices can vary.